



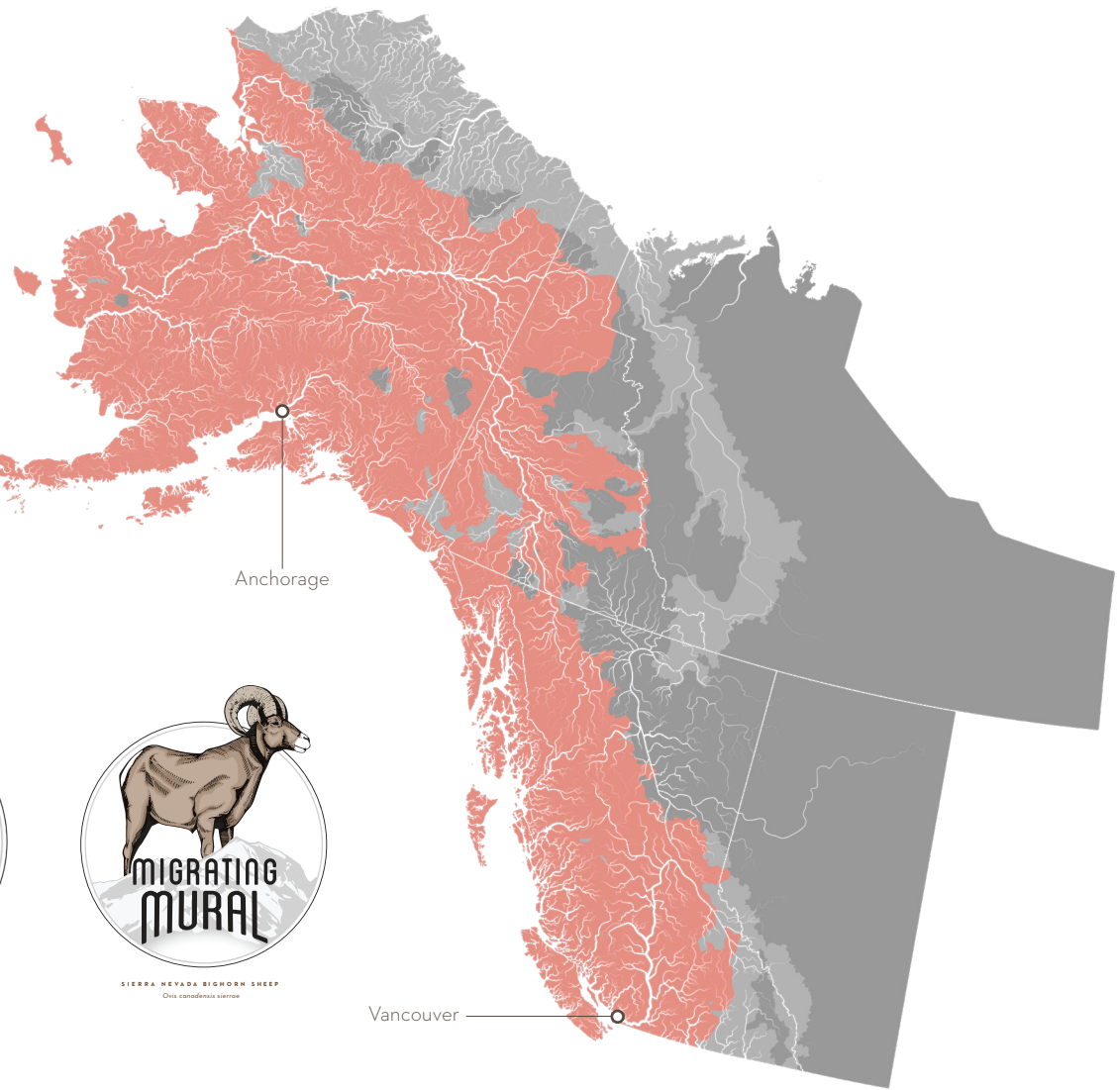
**SALMONIDS**  
*Oncorhynchus spp.*

Art, Wonder, and The Natural World

INK  DWELL

## Alaska and Canada

-  *Oncorhynchus* spp.  
Current Range
-  *Oncorhynchus* spp.  
Historic Range



SALMONIDS  
*Oncorhynchus* spp.



MONARCH BUTTERFLY  
*Danaus plexippus*



SIERRA NEVADA BIGHORN SHEEP  
*Ovis montanus sierrae*



### Migrating Mural | ABOUT

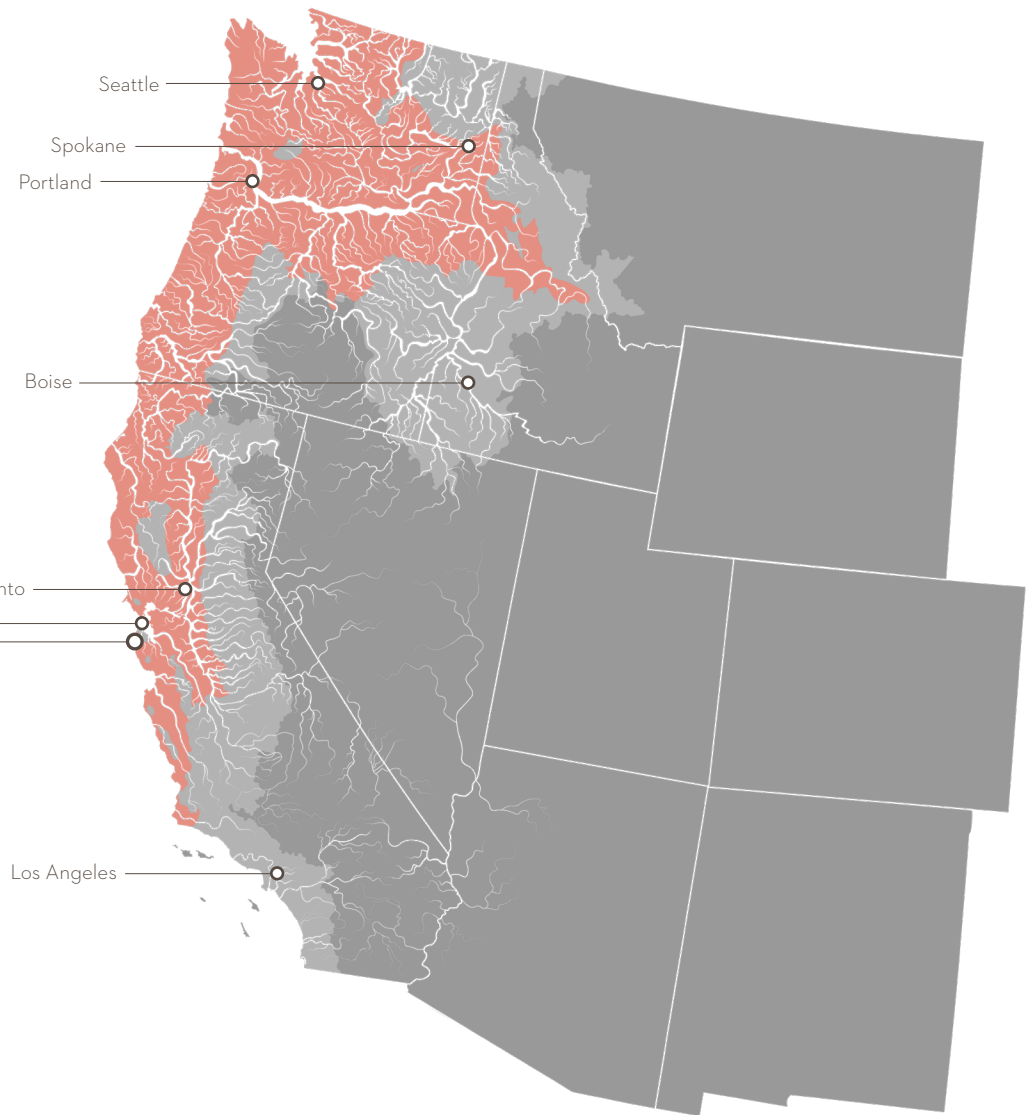
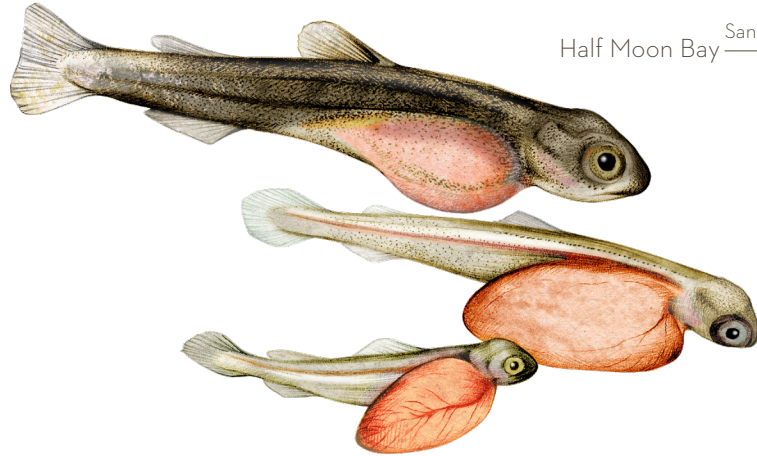
THE MIGRATING MURAL is a series of public artworks highlighting varied wildlife along migration corridors it shares with people.

Our goal is to create a multi-disciplinary storytelling platform that beautifies the local environment while creating powerful tools to drive support, engagement, and education focused on a variety of species and ecosystems under threat.

Ink Dwell's next Migrating Mural is focused on iconic and threatened salmonids.

## Continental United States

-  *Oncorhynchus* spp.  
Current Range
-  *Oncorhynchus* spp.  
Historic Range



ALL CONTENT © 2021 INK DWELL, LLC. INK DWELL.COM



## Migrating Mural | ABOUT

Ink Dwell's third Migrating Mural series focuses on *Oncorhynchus*, the genus of salmonids that includes steelhead trout and coho, chinook, pink, chum, and sockeye salmon. These spectacular migrators are born in cold clean rivers of the Pacific Northwest, spend their life in the ocean, and return to their home rivers—sometimes decades later—to spawn, then die.

Ink Dwell will produce a network of Salmon Migrating Murals to celebrate these beautiful and threatened fish—social, cultural, and ecological keystones of the Pacific Northwest.



MONARCH BUTTERFLY

*Danaus plexippus*

ALL CONTENT © 2021 INK DWELL, LLC. INK DWELL.COM



**Migrating Mural** | MONARCH  
BUTTERFLY

Ink Dwell's second Migrating Mural series, which launched in 2017, features the threatened monarch butterfly with nine murals across the United States.



ALL CONTENT © 2021, INK DWELL, LLC. INK DWELL.COM



*Migrating Mural* | MONARCH  
BUTTERFLY

1. *Le Papillon*  
San Francisco, CA



2. *Our Families*  
San Francisco, CA

3. *Generations*  
Ogden, UT



4. *Monarch in Moda*  
Ogden, UT



5. *Ogden Nature Center*  
Ogden, UT



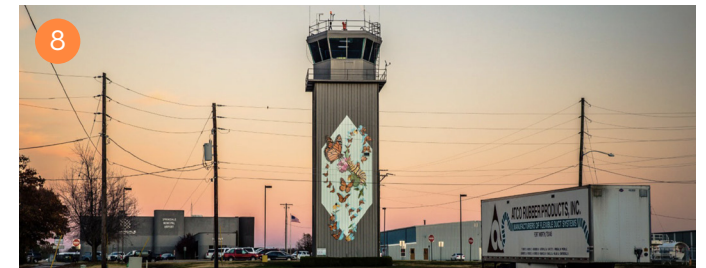
6. *Midnight Dream*  
Orlando, FL



7. *Milkweed Galaxy*  
Winter Park, FL



8. *Kaleidoscope*  
Springdale, AR



**Migrating Mural** | MONARCH  
BUTTERFLY



SIERRA NEVADA BIGHORN SHEEP

*Ovis canadensis sierrae*



**Migrating Mural** | SIERRA NEVADA  
BIGHORN SHEEP

Ink Dwell's first Migrating Mural series, which launched in 2012, features the endangered Sierra Nevada bighorn sheep with six murals along a 120-mile stretch of California's Highway 395.



ALL CONTENT © 2021 INK DWELL, LLC. INK DWELL.COM



*Migrating Mural* | MT. WILLIAMSON MOTEL





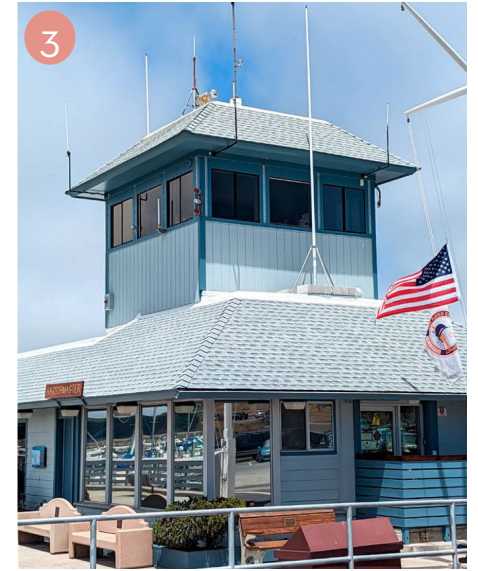
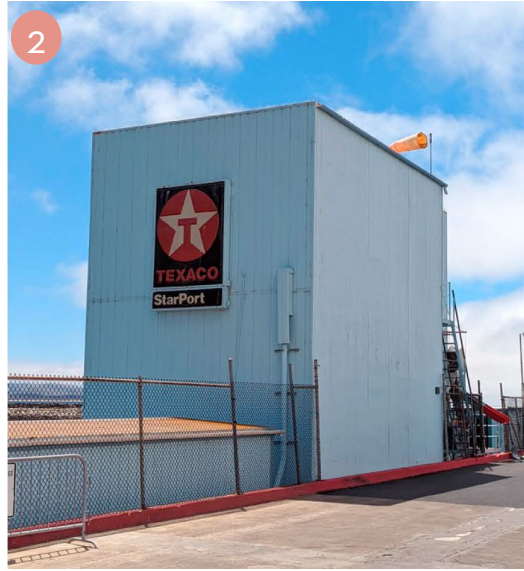
ALL CONTENT © 2021 INK DWELL, LLC. INK DWELL.COM



**Migrating Mural** | CALIFORNIA HWY 395

“Conservation work is often done far from the public eye. The Migrating Mural is a unique and beautiful way to communicate our need to protect endangered wildlife and the ecosystems upon which they rely.”

--Dr. Tom Stephenson, California Department of Fish and Wildlife Sierra Bighorn Recovery Program



**Pillar Point | PROJECT SCOPE**

Our Salmon Migrating Mural series will begin at Pillar Point in collaboration with NOAA and Hatch Elementary. The scope of work will include the following:

1. Bathrooms - Salmon mural around the bathroom structure with Hatch Elementary
2. Texaco tower - Texaco sign moved and ocean food web mural wrapped across two sides
3. Harbor Master Building - Nudibranch mural around the lookout tower
4. NOAA dock interpretive signage - Imagery from mural will be incorporated into updated signage

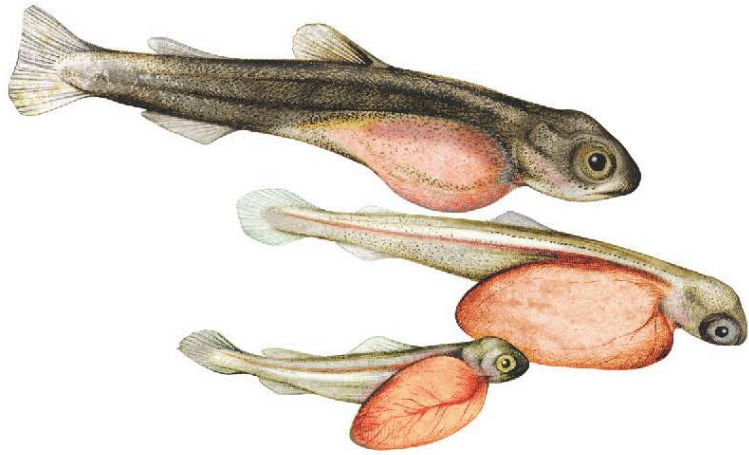


**Pillar Point** | SITE 1

## BATHROOMS

For this site, Ink Dwell proposes a mural that celebrates the remarkable biology of salmon by following their journey from when they hatch in freshwater streams and rivers, to their migration out to the saltwater environment of the ocean to feed and grow, and the arduous return to their natal waters to spawn and die. A portion of the imagery will be a collaboration between students of Hatch Elementary and Ink Dwell.

The mural would kick off Ink Dwell's Salmon Migrating Mural, joining the lauded Bighorn Sheep and Monarch Migrating Mural series and completing land, sky and sea respectively.

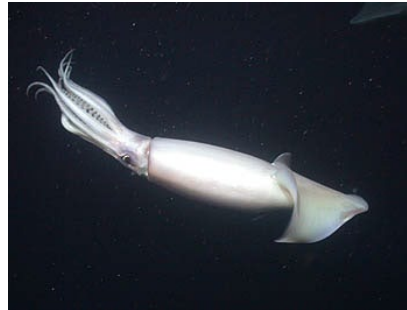


STEELHEAD ENTRYWAY  
2019  
San Francisco, CA



In 2018, Ink Dwell created *Inching Forward* with students of SF Day School. Each student developed their own milkweed. We envision students of Hatch Elementary developing their own salmon fry for the mural





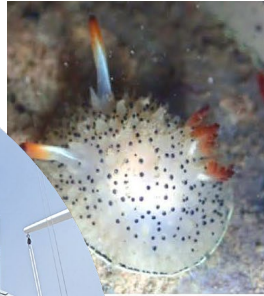
**Pillar Point** | SITE 2

### TEXACO TOWER

Pillar Point is a working harbor. The theme for this site will explore our critical ocean food web, the importance of understanding the fluid and interwoven system, and our role within that system.



Assortment of ocean and ocean food web themed murals



**Pillar Point** | SITE 3

### HARBOR MASTER BUILDING

For this site, we envision creating a colorful and pattern filled mural inspired by the dazzling nudibranchs of Pillar Point.

Nudibranchs are spectacular, if often overlooked, soft-bodied, marine gastropods noted for their extraordinary colors and forms. The San Mateo coast is home to a riot of nudibranch species. Nudibranchs remind us that the ocean is a colorful party of visual wonder.





ALL COURTESY OF INK DWELL, INK DWELL LLC - INKDWELL.COM



**Pillar Point** | SITE 3

In 2018, Ink Dwell created *Monarch in Moda*, which also explores pattern and color. This has become one of Ink Dwell's most celebrated murals.



**Pillar Point** | SITE 4

#### INTERPRETIVE SIGNAGE

Ink Dwell will be updating the existing signage in collaboration with NOAA. We will be using imagery created for the murals, visually tying the whole harbor together.