



U.S. Department
of Homeland Security
**United States
Coast Guard**

LOCAL NOTICE TO MARINERS

District: 11

Week: 21/21

CORRESPONDENCE TO:
COMMANDER
DISTRICT ELEVEN (DPW)
COAST GUARD ISLAND BUILDING 50-2
ALAMEDA, CA 94501-5100

REFERENCES: COMDTPUB P16502.6, Light List Volume VI, 2017 Edition, U.S. Chart No.1 12th Edition, and Coast Pilot Volume 7 49th Edition. These publications, along with corrections, are available at: <https://nauticalcharts.noaa.gov/>

BROADCAST NOTICE TO MARINERS - Information concerning aids to navigation and waterway management promulgated through BNM HB-0009-21, SF-0083-21, LA-0081-21, and SD-0036-21 have been incorporated in this notice, or will continue if still significant.

SECTION I - SPECIAL NOTICES

This section contains information of special concern to the Mariner.

SUBMITTING INFORMATION FOR PUBLICATION IN THE LOCAL NOTICE TO MARINERS

A complete set of guidelines with examples and contact information can be found at <http://www.pacificarea.uscg.mil/Our-Organization/District-11/Prevention-Division/LnmRequest/> or call Waterways Management Branch at 510-437-2929 or e-mail D11-SMB-D11-LNM@uscg.mil. Please provide all Local Notice to Mariners submissions 14 days prior to the start of operations

LNM: 17/21

BRIDGE INFORMATION- PROJECTS, DISCREPANCIES, CORRECTIONS & REGULATORY

For all bridge related issues, including lighting, operation, obstructions, construction, demolition, etc. contact the Eleventh Coast Guard District Bridge Administrator 24 hour cell phone at 510-219-4366. Flotsam may accumulate on and near bridge piers and abutments. Mariners should approach all bridges with caution. A vessel delay at a drawbridge may be reported to the District Bridge Administrator by telephone, or by using the Delay_Report_11-2017.pdf included in the Enclosures section of this Local Notice to Mariners.

BRIDGE INFORMATION-COMMUNICATIONS PROTOCOL-BENICIA/MARTINEZ UPRR BRIDGE- CARQUINEZ STRAIT

All mariners requiring a bridge lift at the Benicia-Martinez Union Pacific Railroad Bridge, mile 7.0, over the Carquinez Strait, California, should follow the protocol in the document entitled "Coordination of Communications for Union Pacific Railroad Lift Operations." Mariners can download a copy of the document by selecting the link BENICIA-MARTINEZ RR BRIDGE under the QUICK LINKS section at <https://www.pacificarea.uscg.mil/vtssf>.

CANCELLATION OF NOAA PAPER AND RASTER NAUTICAL CHARTS

The National Oceanic and Atmospheric Administration (NOAA) is undertaking a multi-year program to end production and maintenance of its suite of over 1,000 traditional paper nautical charts and all associated raster chart products and services, including: Print-on-Demand (POD) paper nautical charts, Full-size chart PDF files, BookletChart™ PDF files, NOAA raster navigational charts (NOAA RNC®), the NOAA RNC tile service, and the online RNC viewer.

Six months notice of the intent to cancel a specific chart is provided in a "Last Edition" notice. The final cancellation of a chart is made in a "Canceled" notice. Both types of notices will appear in LNM Section IV, "Chart Correction." A comprehensive list of all canceled NOAA charts is available at: <http://www.charts.noaa.gov/MCD/Dole.shtml>.

Traditional paper nautical chart production is ending to enable the creation and maintenance of larger scale, more up-to-date, higher quality coverage of NOAA's electronic navigational chart (NOAA ENC®) product. This will significantly enhance the amount of charted detail available to mariners. More information about NOAA's program to sunset traditional paper charts is on the NOAA Coast Survey website at: <https://nauticalcharts.noaa.gov/charts/farewell-to-traditional-nautical-charts.html>

An online NOAA Custom Chart application at: <https://devgis.charttools.noaa.gov/pod> is available to create chart images from ENC data, which may then be printed. Notices to Mariners will not be issued for NOAA Custom Charts.

LNM: 07/21

CAUTION TO BE USED IN RELIANCE UPON AIDS TO NAVIGATION

The aids to navigation depicted on charts comprise a system of fixed and floating aids to navigation with varying degrees of reliability. Prudent mariners will not rely solely on any single aid to navigation, particularly a floating aid to navigation. With respect to buoys, the buoy symbol is used

to indicate the approximate position of the buoy body and the sinker which secures the buoy to the seabed. The approximate position is used because of the practical limitations in positioning and maintaining buoys and their sinkers in precise geographical locations. These limitations include, but are not limited to, inherent imprecision in position fixing methods, prevailing atmospheric and sea conditions, slope of and the material making up the seabed, the fact that buoys are moored to sinkers by varying length of chain, and the fact that the buoy body and/or sinker positions are not under continuous surveillance, but are normally checked only during periodic maintenance visits which often occur more than a year apart. Due to the forces of nature, the position of the buoy body can be expected to shift inside and outside the charted symbol. The mariner is also cautioned that buoys may be extinguished or sound signals may not function as the result of natural causes, collisions, or other accidents. For the foregoing reasons, a prudent mariner must not rely completely upon the position or operation of floating aids to navigation, but will also utilize bearings from fixed objects and aids to navigation on shore. Furthermore, a vessel attempting to pass close aboard always risks collision with a yawing buoy or with the obstruction that the buoy marks.

INSTRUCTIONS TO SUBSCRIBE TO DISTRICT 11 WEEKLY LNM

1. Follow this link: <https://www.dco.uscg.mil/Featured-Content/Mariners/Local-Notice-to-Mariners-LNMs/>
2. Select the applicable District from the column on the left.
3. Click "Please subscribe to receive email updates here."
4. Enter your email address.
5. Click Submit.

LNM: 10/21

NORTHERN CALIFORNIA-HUMBOLDT BAY-SEASONAL AID DISCONTINUANCE

Humboldt Bay Lighted Bell Buoy 2 (LLNR 8135) will be temporarily discontinued for the 2020-2021 winter season until May 2021. The buoy is scheduled for re-establishment and back on-station May 2021. A Synthetic AIS for the aid position is active and will be available year-round for this aid position. For more details or comments contact LT Ruth Sadowitz at 510-437-3801 or ruth.a.sadowitz@uscg.mil.

Charts: 18620 18622

LNM: 48/20

NORTHERN CALIFORNIA-OFFSHORE MONTEREY BAY-MONTEREY BAY NATIONAL MARINE SANCTUARY

US Coast Guard, NOAA and the International Maritime Organization (IMO) established Recommended Tracks in NOAA's Monterey Bay National Marine Sanctuary to enhance the safety and navigation of large vessels (over 300 gross tons) and oil tankers transiting through the sanctuary, as well as to protect sensitive marine environments. It is recommended that laden tankers transit 50 miles offshore and use the western TSS when entering or leaving San Francisco. For further information see enclosure NATIONAL MARINE SANCTUARY.pdf. Mariners are requested to transit the area with caution. For more details or comments contact LT Anthony Solares at 415-399-3585.

Charts: 18680 18685

LNM: 20/21

NORTHERN CALIFORNIA-OFFSHORE SAN FRANCISCO-VESSEL ADRIFT

The U.S. Coast Guard received a report of a 41-foot single masted white Beneteau sailboat not under command with no persons aboard with sails raised in position 36-56.6N 124-00.4W on approximate course 227t making 02 kts. Mariners can track the adrift vessel at https://forecast.predictwind.com/tracking/display/SV_Believe?mapMode=useAtlas&windSymbol=WindStreamlines&weatherSource=ECMWF. Mariners are requested to keep a sharp lookout and use caution when transiting the area. For more information contact USCG Sector San Francisco on VHF-FM Chan. 16, phone 415-399-3530, TELEX 230172343, e-mail: [SFOSCC\(AT\)USCG.MIL](mailto:SFOSCC(AT)USCG.MIL)

Charts: 18022 18640 18645 18680

LNM: 21/21

NORTHERN CALIFORNIA-PILLAR POINT-ATON TEMPORARY CHANGE

Temporary changes have been made to the sound signal at Pillar Point Harbor Entrance Light (LLNR 4145) at 37-29-38.473N 122-29-04.948W. This change, which is scheduled to be evaluated through July 2021, has resulted in a slightly lower intensity sound signal to the North, North-East, and East of the aid. Mariners are encouraged to submit their feedback concerning any impact this change may have on navigational safety. Comments concerning this project can be sent to Sector San Francisco Waterways Safety, CWO Price, Mickey.T.Price@uscg.mil.

Charts: 18645 18680 18682

LNM: 21/21

NORTHERN CALIFORNIA-SAN FRANCISCO APPROACH-SPEED REDUCTION

NOAA and the USCG request that all vessels 300 gross registered tons (GRT) or larger reduce speeds to 10-knots when transiting the San Francisco Traffic Separation Scheme (SF TSS) until 15 Nov 21, to protect endangered blue, humpback and fin whales; see enclosure VSRMap2021_SF.pdf.pdf. These areas contain populations of endangered blue, humpback and fin whales that are federally protected under the Federal Endangered Species Act (16 USC 1538 et seq.), the Marine Mammal Protection Act (16 USC 1361 et seq.), and the National Marine Sanctuaries Act (16 USC 1431 et seq).

Please report any collisions with whales or any observed injured or dead whales to the U.S. Coast Guard on VHF Channel 16. NOAA is asking for the public's help in tracking whales. Please report sightings through WhaleAlert, a free application available at <http://westcoast.whalealert.org>.

Charts: 18640 18680

LNM: 15/21

NORTHERN CALIFORNIA-SAN FRANCISCO-HAZARD TO NAVIGATION

Coast Guard Sector San Francisco is issuing a Marine Safety Information Bulletin (MSIB) 20-02. Vessels are reminded to utilize navigation lights In Accordance With (IAW) the Convention on the International Regulations for Preventing Collisions at Sea, 1972 (COLREGS) Rule 20 and Rule 20 of The Inland Navigational Rules Act of 1980 (33 C.F.R. 83.20). This notice is specifically addressing commercial vessels transiting with high-

intensity "work lights" in navigation corridors around San Francisco Bay. Vessels are encouraged to maintain an active watch and maintain communication on VHF-FM Chan. 13 and 16 and, when the intentions of another vessel are unclear, communicate arrangements to reduce the risk of collision. For more details see enclosure Commercial_Fishing_Vessel_Hazard.pdf.

Chart 18649

LNM: 51/20

NORTHERN CALIFORNIA-SAN FRANCISCO-MILE ROCKS LIGHT-REDUCED NOMINAL RANGE

Mile Rocks Light (LLNR 365) will have a temporarily reduced intensity of 5nm until further notice. Mariners are requested to transit the area with caution. For more details or comments contact LT Ruth Sadowitz at 510-437-3801.

Charts: 18007 18010 18020 18022 18640 18645 18649 18680

LNM: 16/19

NORTHERN CALIFORNIA-SAN FRANCISCO-WHALE MIGRATION

An annual whale migration is taking place off the coast of Northern California. There are multiple species of whales transiting our waters. Mariners are requested to proceed with caution and maintain a sharp lookout. Whale sightings can be reported to the National Oceanic and Atmospheric Administration(NOAA) through their free app named "Whale Alert". If a marine mammal is dead, injured or stranded please call 866-767-6114.

Chart 18649

LNM: 15/21

OFFSHORE CALIFORNIA-COMMERCIAL SALMON FISHERIES

The Commercial Salmon Fishery south of Cape Falcon from the Oregon/California border to Humboldt South Jetty (California KMZ), previously scheduled to open May 1 to May 31, 2021 will not open as scheduled.

The recreational fishery south of Cape Falcon from the Oregon/California border to Horse Mountain (California KMZ), previously scheduled to open May 1, 2021, is delayed until final 2021 ocean salmon fisheries are adopted at the April council meeting and approved by NMFS in May.

Effective April 15, 2021. The commercial ocean salmon fishery from Point Arena to Pigeon Point (San Francisco Management Area) will be open June 16 - June 30, 2021.

Effective April 15, 2021. The commercial ocean salmon fishery from Pigeon Point to the U.S./Mexico border (Monterey Management area) will be open May 1 - May 12, 2021.

Charts: 18600 18620 18640 18680 18700 18720 18740

LNM: 17/21

SAN DIEGO-SANTA BARBARA-OBSTRUCTION

There is flag pole located in front of Santa Barbara Harbor Breakwater light (LLNR 3750). The flag pole is approximately 8-10 ft away from the aid, extends about 4-5 ft above the light and is at a bearing of 062. There is a possibility that the flagpole may obscure the visibility of the light if mariners are approaching from that bearing. Mariners are requested to transit the area with caution. For more details or comments contact Sector San Diego at 619-278-7000.

LNM: 27/20

SOUTHERN CALIFORNIA- DANA POINT TO POINT ARGUELLO - VOLUNTARY SPEED REDUCTION

NOAA and the USCG request that all vessels 300 gross registered tons (GRT) or larger reduce speeds to 10-knots or less when transiting from Dana Point to Pt. Arguello until 30 Nov 21, to protect endangered whales; see enclosure VSRMap2021_SC.pdf. These areas contain populations of endangered blue, humpback and fin whales that are federally protected under the Federal Endangered Species Act (16 USC 1538 et seq.), the Marine Mammal Protection Act (to protect endangered whales 16 USC 1361 et seq.), and the National Marine Sanctuaries Act (16 USC 1431 et seq.). Vessels already transiting south of the northern Channel Islands are also encouraged to transit outside of the voluntary extended area to be avoided to reduce the overlap of ships and endangered whales.

Please report any collisions with whales or any observed injured or dead whales to the U.S. Coast Guard on VHF Channel 16. NOAA is asking for the public's help in tracking whales. Please report sightings through WhaleAlert, a free application available at <http://westcoast.whalealert.org>.

Charts: 18700 18720 18740

LNM: 15/21

SOUTHERN CALIFORNIA-SAN DIEGO-MARINE CONSTRUCTION

Oceanside Breakwater Light 1 (LLNR 2295) is under construction and will not be operational until completion. Mariners are requested to transit the area with caution. For more details or comments contact Sector San Diego at 619-278-7000.

Chart 18740

LNM: 06/21

SOUTHERN CALIFORNIA-SAN DIEGO-SUBMERGED OBJECT

An anchored 16 ft center console pleasure craft has capsized and remains afloat 600 yds south of Hotel Del Coronado at 32-40-06N 117-10-09W. No Distress is associated with this wreck which has been marked with an unlit red marker buoy in approximately 28 ft of water. Mariners are requested to transit the area with caution. For more details or comments contact Coast Guard Sector San Diego at 619-278-7000.

Chart 18772

LNM: 34/20

SOUTHERN CALIFORNIA-SAN DIEGO-SUBMERGED OBJECT

A large ship anchor and 300 ft of anchor chain have been reported lost in 39 ft of water one nautical mile west of Silver Strand State Beach at 32-38-24N 117-10-08W. Mariners are requested to transit the area with caution. For more details or comments contact sector San Diego at

SOUTHERN CALIFORNIA-VESSEL CYBERSECURITY ALERT-LOS ANGELES-LONG BEACH

The Los Angeles-Long Beach maritime community should be on high alert for phishing emails from malicious actors impersonating USCG email addresses. See enclosure (Vessel Cybersecurity Alert.pdf) below for more information.

SUBMITTING INFORMATION FOR PUBLICATION IN THE LOCAL NOTICE TO MARINERS

Coast Guard District Eleven Waterways upgrade to E-Mail capabilities. All future requests for article submission in the District Eleven Local Notice to Mariners are requested to be E-Mailed to D11-SMB-SMB-D11-LNM@uscg.mil at least two weeks prior to the operation. For more details or comments please contact District Eleven Waterways Management Branch at 510-437-2929 or e-mail D11-SMB-D11-LNM@uscg.mil. Coast Guard District Eleven requests all Local Notice to Mariners submissions be E-Mailed to our office at least 14 days prior to the start of operations for timely submittal and publication.

SECTION II - DISCREPANCIES

This section lists all reported and corrected discrepancies related to Aids to Navigation in this edition. A discrepancy is a change in the status of an aid to navigation that differs from what is published or charted.

DISCREPANCIES (FEDERAL AIDS)

LLNR	Aid Name	Status	Chart No.	BNM Ref.	LNM St	LNM End
1	Dart Tsunami Warning Lighted Buoy Station 46412	ADRIFT	18022	SD-0039-18	52/16	
125	Long Beach Light	LT EXT	18751	LA-0148-20	49/20	
345	San Francisco South Traffic Lane Lighted Bell Buoy S	MISSING	18645	SF-0042-21	09/21	
365	Mile Rocks Light	REDUCED INT	18649	SF-0251-17	49/17	
415	Arena Cove Lighted Bell Buoy A	SINKING	18640	HB-0010-20	25/20	
2641	Isthmus Cove Harbor Reefs Light	STRUCT DMGD	18757	LA-0018-21	05/21	
2670	Santa Catalina Island West End Light	LT EXT	18757	LA-0113-19	34/19	
3007	Long Beach Channel Pier J Lighted Buoy 2	LT EXT	18751	LA-0007-21	02/21	
3012	Long Beach Light	LT EXT	18751	LA-0148-20	49/20	
3625	Port Hueneme Channel Lighted Buoy 6	LT EXT/STRUCT DMGD	18725	LA-0080-21	21/21	
3970	Monterey Harbor Light 6	SS INOP	18685	SF-0064-20	27/20	
4240	Four Fathom Bank Lighted Bell Buoy	MISSING	18649	SF-0007-21	02/21	
4245	Mile Rocks Light	REDUCED INT	18649	SF-0251-17	49/17	
4315	Alcatraz Light	LT EXT	18650	SF-0023-21	06/21	
4330	Harding Rock Lighted Buoy HR	RAC INOP	18650	SF-0056-21	13/21	
4680	Oakland Inner Harbor Light 10	MISSING/TRUB	18650	SF-0052-21	11/21	
5130	San Francisco Bay South Channel Light 8	DAYMK MISSING	18651	SF-0023-20	08/20	
5250	Redwood Creek Light 16	STRUCT DMGD/TRLB	18651	SF-0109-19	43/19	
5895	Point Pinole Light P	LT EXT	18654	SF-0071-21	17/21	
6095	Mare Island Strait Light 2	STRUCT DMGD/TRLB	18655	SF-0152-20	49/20	
6165	Napa River Light 8	STRUCT DEST/TRLB	18654	SF-0123-14	34/14	
6195	Napa River Light 15	DAYMK MISSING	18654	SF-0036-17	05/17	
6506	Suisun Bay Buoy A	BUOY DMGD	18658	SF-0120-20	40/20	
6913	Stockton Channel Light 1	STRUCT DMGD	18660	SF-0072-19	23/19	
7235	Sacramento River Deep Water Ship Channel Light 15	MISSING/TRLB	18660	SF-0100-20	35/20	

7240	Sacramento River Deep Water Ship Channel Light 16	STRUCT DEST/TRLB	18660	SF-0127-18	34/18
7985	Bodega Harbor Channel Daybeacon 42	MISSING	18643	SF-0051-21	11/21
8085	Noyo River Entrance Lighted Bell Buoy 2	MISSING	18626	HB-0007-21	11/21
8205	Humboldt Bay Light 11	SINKING	18622	HB-0005-21	09/21

DISCREPANCIES (FEDERAL AIDS) CORRECTED

LLNR	Aid Name	Status	Chart No.	BNM Ref.	LNM St	LNM End
135	Los Angeles Light	WATCHING PROPERLY	18751	LA-0015-21	04/21	21/21
3110	Los Angeles Light	WATCHING PROPERLY	18751	LA-0015-21	04/21	21/21
3785	Santa Barbara Harbor Lighted Buoy 11	WATCHING PROPERLY	18725	LA-0154-20	50/20	21/21

DISCREPANCIES (PRIVATE AIDS)

LLNR	Aid Name	Status	Chart No.	BNM Ref.	LNM St	LNM End
20	Ocean Beach Pier Fog Sound Signal	SS INOP	18765	SD-0002-19	05/19	
158	Scripps Waverider Lighted Research Buoy 092	OFF STA	18746		45/18	
1765	Harbor Island East Basin Channel Buoy 2	OFF STA	18773	SD-0028-19	19/19	
1775	Harbor Island East Basin Channel Buoy 4	MISSING	18773	SD-0039-20	29/20	
1790	Harbor Island East Basin Channel Buoy 10	OFF STA	18773	SD-0044-19	27/19	
1900	Glorietta Bay Channel Lighted Buoy 8	LT IMCH	18773		50/18	
2070	Coronado Cays Channel Daybeacon 3	STRUCT DEST	18773	SD-0098-17	36/17	
2288	Scripps Waverider Lighted Research Buoy 220	OFF STA	18765	SD-0041-20	30/20	
2289.1	Scripps Waverider Lighted Research Buoy 100	OFF STA	18765		22/20	
2289.4	Scripps "CORDC" Lighted Research Buoy	MISSING	18765		22/20	
2871	Long Beach Harbor Brusco Lighted Mooring Buoy	LT EXT	18751	LA-0009-21	03/21	
3339.2	REDONDO HARBOR LIGHT	LT EXT	18744	LA-0181-18	52/18	
3420	Hyperion Lighted Gong Buoy 10 ES	LT EXT	18744		16/20	
4401	Richardson Bay Daybeacon 8	DAYMK DMGD	18653		15/20	
4402	Richardson Bay Daybeacon 9	STRUCT DMGD	18649	SF-0086-18	23/18	
4576	South Beach Harbor North Entrance Light 2	LT EXT	18650	SF-0047-21	11/21	
4577	South Beach Harbor North Entrance Light 1	LT EXT	18650	SF-0046-21	10/21	
4578	South Beach Harbor South Entrance Light 1	LT EXT	18650	SF-0091-20	33/20	
4826	Bay Farm Island Light 1	LT EXT	18650	SF-0014-19	05/19	
4826.15	Bay Farm Island Light 3	LT EXT	18650	SF-0014-19	04/19	
4827.1	Anchorage 9 Lighted Mooring Buoy A	LT EXT	18650	SF-0012-20	04/20	
4828.1	Anchorage 9 Lighted Mooring Buoy B	LT EXT	18650	SF-0013-20	04/20	
5661	Southampton Shoal Outfall Lighted Buoy 1	LT EXT/RAC INOP	18653	SF-0026-19	07/19	
5661	Southampton Shoal Outfall Lighted Buoy 1	SINKING	18653	SF-0029-20	18/21	
5662	Southampton Shoal Outfall Lighted Buoy 2	LT IMCH	18653	SF-0059-21	14/21	
5877.2	San Rafael Rock Quarry Mooring Buoy C	MISSING	18653		36/18	
6623	New York Slough Koch West Light	LT IMCH	18659		39/18	
6624	New York Slough Koch East Light	LT EXT	18659		39/18	
6645.5	Delta Diablo Outfall Lighted Buoy	BUOY DMGD	18659		39/18	

DISCREPANCIES (PRIVATE AIDS) CORRECTED

LLNR	Aid Name	Status	Chart No.	BNM Ref.	LNM St	LNM End
------	----------	--------	-----------	----------	--------	---------

None

PLATFORM DISCREPANCIES

Name	Status	Position	BNM Ref.	LNM St	LNM End
------	--------	----------	----------	--------	---------

None

PLATFORM DISCREPANCIES CORRECTED

Name	Status	Position	BNM Ref.	LNM St	LNM End
------	--------	----------	----------	--------	---------

None

SECTION III - TEMPORARY CHANGES and TEMPORARY CHANGES CORRECTED

This section contains temporary changes and corrections to Aids to Navigation for this edition. When charted aids are temporarily relocated for dredging, testing, evaluation, or marking an obstruction, a temporary correction shall be listed in Section IV giving the new position.

TEMPORARY CHANGES

LLNR	Aid Name	Status	Chart No.	BNM Ref.	LNM St	LNM End
280	Point Sur Light	Reduced Intensity	18686	SF-0105-20	35/20	

TEMPORARY CHANGES CORRECTED

LLNR	Aid Name	Status	Chart No.	BNM Ref.	LNM St	LNM End
------	----------	--------	-----------	----------	--------	---------

None

PLATFORM TEMPORARY CHANGES

Name	Status	Position	BNM Ref.	LNM St	LNM End
------	--------	----------	----------	--------	---------

None

PLATFORM TEMPORARY CHANGES CORRECTED

Name	Status	Position	BNM Ref.	LNM St	LNM End
------	--------	----------	----------	--------	---------

None

SECTION IV - CHART CORRECTIONS

This section contains corrections to federally and privately maintained Aids to Navigation, as well as NOS corrections.

This section contains corrective actions affecting chart(s). Corrections appear numerically by chart number, and pertain to that chart only. It is up to the mariner to decide which chart(s) are to be corrected. The following example explains individual elements of a typical chart correction.

Chart Number	Chart Edition	Edition Date	Last Local Notice to Mariners	Horizontal Datum Reference	Source of Correction	Current Local Notice to Mariners
12327	91st Ed.	19-APR-97	Last LNM: 26/97	NAD 83		27/97
Chart Title: NY-NJ-NEW YORK HARBOR - RARITAN RIVER						
Main Panel 2245 NEW YORK HARBOR						
(Temp) ADD	NATIONAL DOCK CHANNEL BUOY 3				CGD01	at 40-41-09.001N 074-02-48.001W
Corrective Action	Green can	Object of Corrective Action			Position	

(Temp) indicates that the chart correction action is temporary in nature. Courses and bearings are given in degrees clockwise from 000 true. Bearings of light sectors are toward the light from seaward. The nominal range of lights is expressed in nautical miles (NM) unless otherwise noted.

18010	22nd Ed.	01-SEP-12	Last LNM: 29/20	NAD 83		21/21
--------------	-----------------	------------------	------------------------	---------------	--	--------------

ChartTitle: Monterey Bay to Coos Bay

Main Panel 1653 MONTEREY BAY TO COOS BAY. Page/Side: N/A

DELETE NOAA Environmental Lighted Buoy 46044 CGD11 36-42-01.000N 122-23-24.000W

18020 39th Ed. 01-JAN-12 Last LNM: 10/21 NAD 83 21/21

ChartTitle: San Diego to Cape Mendocino

Main Panel 1654 SAN DIEGO TO CAPE MENDOCINO. Page/Side: N/A

DELETE NOAA Environmental Lighted Buoy 46044 CGD11 36-42-01.000N 122-23-24.000W

18022 36th Ed. 01-JUN-11 Last LNM: 10/21 NAD 83 21/21

ChartTitle: San Diego to San Francisco Bay

Main Panel 1655 SAN DIEGO TO SAN FRANCISCO BAY. Page/Side: N/A

DELETE NOAA Environmental Lighted Buoy 46044 CGD11 36-42-01.000N 122-23-24.000W

18665 11th Ed. 01-AUG-04 Last LNM: 09/21 NAD 83 21/21

ChartTitle: Lake Tahoe (Metric)

Main Panel 1865 LAKE TAHOE. Page/Side: N/A

LAST EDITION No new editions of chart 18665 will be published. It will be canceled on 26-Aug-21. Comparable or larger scale Electronic Navigational Chart (ENC) coverage is available. See "Cancellation of NOAA Paper and Raster Nautical Charts" in Section I of this LNM for details. A list of all canceled NOAA charts is at https://www.charts.noaa.gov/MCD/Dole.shtml. NOS --

18680 32nd Ed. 01-MAY-13 Last LNM: 33/16 NAD 83 21/21

ChartTitle: Point Sur to San Francisco

Main Panel 1866 POINT SUR TO SAN FRANCISCO. Page/Side: N/A

DELETE NOAA Environmental Lighted Buoy 46044 CGD11 36-42-01.000N 122-23-24.000W
RELOCATE NOAA Environmental Lighted Buoy 46114 Relocate CGD11 from 36-42-58.600N 122-20-54.900W to 36-42-00.000N 122-20-33.000W

SECTION V - ADVANCE NOTICES

This section contains advance notice of approved projects, changes to aids to navigation, or upcoming temporary changes such as dredging, etc. Mariners are advised to use caution while transiting these areas.

SUMMARY OF ADVANCED APPROVED PROJECTS

Approved Project(s) Project Date Ref. LNM
None

Advance Notice(s)

SOUTHERN CALIFORNIA-ANAHEIM BAY-TEMPORARY CHANGE

The U.S. Coast Guard will temporarily change the following aids to floating aids in regards to the Anaheim Bay Project:

- Anaheim Bay Channel Light 9 LLNR (2820)
Anaheim Bay Channel Light 10 LLNR (2825)
Anaheim Bay Channel Light 11 LLNR (2826)
Anaheim Bay Channel Light 13 LLNR (2827)
Anaheim Bay Channel Light 17 LLNR (2829)

For more details or comments contact LT Ruth Sadowitz at 510-437-3801 or ruth.a.sadowitz@uscg.mil.

Chart 18749 LNM: 15/20

SECTION VI - PROPOSED CHANGES

Periodically, the Coast Guard evaluates its system of aids to navigation to determine whether the conditions for which the aids to navigation were established have changed. When changes occur, the feasibility of improving, relocating, replacing, or discontinuing aids are considered. This section contains notice(s) of non-approved, proposed projects open for comment. SPECIAL NOTE: Mariners are requested to respond in writing to the District office unless otherwise noted (see banner page for address).

PROPOSED WATERWAY PROJECTS OPEN FOR PUBLIC COMMENT

Proposed Project(s) Closing Docket No. Ref. LNM
None

Proposed Change Notice(s)

SECTION VII - GENERAL

This section contains information of general concern to the Mariners. Mariners are advised to use caution while transiting these areas.

2021 COAST GUARD LIGHT LIST AVAILABILITY

2021 Light Lists are available on the USCG Navigation Center's website at: <http://www.navcen.uscg.gov/?pageName=lightLists>. Coast Guard Light Lists are a means for communicating aids to navigation information to the maritime public. Local Notice to Mariners will continue to advise Light List corrections and NAVCEN will continue to publish a compilation of corrections. Complete versions of the 2021 Light Lists are updated weekly on the NAVCEN website and mariners should download applicable copies and updates as needed at: <http://www.navcen.uscg.gov/?pageName=lightListWeeklyUpdates>. A summary of weekly 2021 Light List corrections are available at: <https://www.navcen.uscg.gov/?pageName=lightListCorrections>.

LNM: 03/21

ARIZONA-BULLHEAD CITY-COLORADO RIVER-DAVIS DAM

A rocky shoal has been reported below the Davis Dam in position 35-11-34N 114-34-16W where depths are reported between 5' to less than 1' depending upon the outflow from the dam. Recreational vessels have been seen running aground after making contact with the rocks as there are no signs or buoys marking the area. Mariners are requested to transit the area with caution. For more details or comments contact USCG Sector San Diego at 619-278-7073.

LNM: 16/18

ARIZONA/CALIFORNIA-COLORADO RIVER-BRIDGE

PARKER RAILROAD BRIDGE- All navigation lights on the bridge are extinguished. Estimated time of repair, unknown. For further information contact the Coast Guard Bridge Office at 510-437-3514.

LNM: 17/21

ARIZONA/CALIFORNIA-COLORADO RIVER-BRIDGE

CIBOLA FARMERS BRIDGE-La Paz County is rehabilitating the bridge Monday through Friday during daylight hours, through 12 Aug 21. A temporary underdeck platform has been installed under span 3 reducing vertical clearance in that span by 4 feet. The main navigational channel is temporarily established in span 4, providing 17 feet vertical clearance over ordinary high water and 48 feet horizontal clearance between piers. Span 4 is marked with upstream and downstream green center channel lights and red pier lights. The upstream and downstream lower edges of the temporary underdeck platform is lighted at night with steady burning red lights (see [Cibola_Alternate_Channel.pdf](#) at the end of this notice). Mariners are requested to transit the area with caution. For conditions at the bridge project site mariners can contact 928-210-1913 or 928-897-1151. For more details or comments, contact the Coast Guard Bridge Office at 510-437-3461.

LNM: 40/20

NORTHERN CALIFORNIA-CARQUINEZ STRAIT-BRIDGE

UPSTREAM AND DOWNSTREAM BENICIA-MARTINEZ HIGHWAY (I-680) BRIDGES-Work has commenced on the replacement-in-kind of all navigation lights, fog horns and RACON of the two bridges. Work will take place Monday through Friday during daylight hours through 22 Feb 22. A 21' aluminum boat, the "BATES RULES" will be tied off of various piers during the work. At no time will the vessel be working in main navigation span of either the upstream or downstream bridge. To ascertain the location of the "BATES RULES" mariners can hail it on VHF-FM Channel 16 or 9, 13, or 14 or call 510-557-1507. The vessel can be moved for navigational safety if at least 15 minutes notice is given to the "BATES RULES." For further information contact the Coast Guard Bridge Office at 510-437-3516.

Chart 18656

LNM: 18/21

NORTHERN CALIFORNIA-CORDELL BANK-SURVEY OPERATIONS

NOAA has deployed two research moorings in the following positions:

38-03-03N 123-27-24W

34-03-24N 123-29-09W

These are orange mooring buoys that have a flat surface float, flagpole, flag, and radar reflector. R/V MUSSEL POINT will be monitoring VHF-FM Chan. 16. Mariners are requested to transit the area with caution. For more details or comments contact Danielle Lipski at 415-464-5264.

Charts: 18010 18645

LNM: 52/18

NORTHERN CALIFORNIA-CORTE MADERA CREEK-BRIDGE

U.S. 101 HIGHWAY BRIDGE-A pedestrian bridge is being constructed on the east side of the highway bridge. Work will take place Monday through Friday 0700-1700, and if needed Sunday night to Thursday night 2300-0600 and Friday night through Saturday night 2300-0800 through 30 Dec 21. Temporary platforms will be erected at each bent of the bridge, reducing horizontal clearance of each span by 14 ft and vertical clearance by 9 ft beneath the platforms. The upstream and downstream lower outboard corners of the temporary platform, in the main navigation span, will be lighted at night with fixed red lights (see [TempPlatform_CorteMaderaCreek.pdf](#) at the end of this notice for location of lights). Temporary walkways will be erected over the channel. Equipment and construction elements will be lifted over the channel at various times during the project. No in-water equipment is anticipated at this time. For conditions at the bridge mariners can contact the contractor at 408-605-2892 or Caltrans at 510-867-6033. For further information contact the Coast Guard Bridge Office at 510-437-3516.

Chart 18649

LNM: 18/21

NORTHERN CALIFORNIA-CORTE MADERA CREEK-BRIDGE

BON AIR RD BRIDGE REPLACEMENT-Construction of the replacement bridge continues. A temporary work trestle spans the channel and provides 20' of horizontal clearance, pile to pile, and 3' of vertical clearance from mean high water to the lowest hittable portion of the trestle (see [BonAirRd_Trestle.pdf](#) at the end of this notice for navigation channel location). Four cofferdams have been placed within the creek to facilitate construction of the replacement bridge piers. Work will be conducted Monday through Saturday from 0700-1800. Mariners are requested to transit

NORTHERN CALIFORNIA-CORTE MADERA CREEK-BRIDGE

the area with caution. For conditions at the construction site, mariners can contact the contractor at 925-953-4610/916-919-2428 or the city at 415-259-7050. For more details or comments contact the Coast Guard Bridge Office at 510-437-3516.

Chart 18649

LNLM: 41/18

NORTHERN CALIFORNIA-DELTA & RIVERS-AMERICAN RIVER-BRIDGE

DOWNSTREAM CA ROUTE 160 BRIDGE-Caltrans has completed replacement of the rock slope scour protection at each in-water pier. The scour slopes ~25 feet from the pier face into the navigation channel (See CA_RT_160_PierScourProtection.pdf drawing at the end of this notice for details.) Mariners should use the center of the navigation channel when transiting the bridge. For further information contact the Coast Guard Bridge Office at 510-437-3516.

Chart 18662

LNLM: 42/20

NORTHERN CALIFORNIA-DELTA & RIVERS-MOKELUMNE RIVER-BRIDGE

I-5 DUAL BRIDGE-Caltrans' contractor has installed three temporary trestles to facilitate retrofit of the dual bridge, one upstream, one downstream and one between the dual bridge. The temporary trestles provide ~9 feet of vertical clearance from Mean High Water to low steel of each trestle and 30 feet of horizontal clearance between bents 2 and 3. The vertical clearance can fluctuate due to changes in the water surface elevation caused by runoff, snowmelt and dam releases. The upstream and downstream temporary navigation span, between bents 2 and 3, are lighted at night with steady burning green lights. The upstream and downstream faces of bents 1, 2, 3 and 4 are lighted at night with steady burning red lights (See I-5_MokeRiver_Trestles.pdf at the end of this notice for lighting diagram.) Work is being conducted Monday through Friday, 0600 to 1530, through 21 Jul 21. For information at the construction site mariners can contact 916-208-6416, 209-518-6936, 916-283-9949, 916-757-2989 or 530-409-8103. Mariners are requested to use extreme caution when transiting the work site as there will be cranes working over the channel. For further information, mariners can contact the Coast Guard Bridge Office at 510-219-4366.

Chart 18662

LNLM: 37/20

NORTHERN CALIFORNIA-DELTA & RIVERS-OLD RIVER-BRIDGE

CA ROUTE 4 DRAWBRIDGE-A temporary change in the operating schedule for the swing span is in effect through 0600 on 07 Aug 21. During this period the swing span of the bridge will open on signal if at least a four hour notification is given to the drawtender at the Rio Vista bridge across the Sacramento River, mile 12.8. The Rio Vista drawtender can be reached at 707-374-2134, primary number, or 209-948-7556, secondary number. This temporary change in the operating schedule of the bridge will assist the Coast Guard in determining whether a permanent change in the schedule is warranted.

Mariners are requested to comment on how the proposed schedule change will impact navigation on the waterway. Boat owners who need a drawspan opening are requested to provide information about their vessels including type of vessel, length overall, draft, beam, and height from the waterline to the highest fixed point and to appurtenant structures (e.g. tuna towers, flying bridges, fixed antennas and radar units). Interested parties are requested to express their views, in writing, giving sufficient detail to establish a clear understanding of their reasons for support of or opposition to the proposed change. Comments will be received at D11-SG-M-DPW-Bridges@uscg.mil through August 7, 2021. For further information contact the Coast Guard Bridge Office at 510-437-3461.

Chart 18661

LNLM: 17/21

NORTHERN CALIFORNIA-DELTA & RIVERS-PETALUMA RIVER-BRIDGE

SMART BLACKPOINT RAILROAD DRAWBRIDGE-The upstream fender system protecting the swing span has been destroyed and does not offer protection for vessels or the bridge. Mariners are urged to use caution while transiting the bridge. For more details or comments contact the Coast Guard Bridge Office at 510-437-3516.

Chart 18654

LNLM: 35/20

NORTHERN CALIFORNIA-DELTA & RIVERS-SACRAMENTO RIVER-BRIDGE

ELKHORN FERRY (I-5) BRIDGE-The upstream clearance gauge is missing. For more details or comments contact the Coast Guard Bridge Office at 510-437-3514.

Chart 18664

LNLM: 13/19

NORTHERN CALIFORNIA-DELTA & RIVERS-SACRAMENTO RIVER-BRIDGE

ISLETON BRIDGE-Caltrans' contractor, Harbor Offshore will be replacing submarine control and communications cables between the bascule piers of the bridge in the main navigation span. Work will be conducted 24-hours a day from 0001 on 18 May 21 through 2359 on 24 May 21. During this period the bascule span of the bridge will open on signal if at least a six hour notification is given to the drawtender at the Rio Vista bridge over the Sacramento River at 707-374-2134. The "CRANE BARGE KELSO" and tug "LINDA T" will be utilized in cable laying operations and may be spudded down in the navigation span. Divers will be in the water during operations. For the safety of navigation, operations can cease and equipment moved if a two-hour notice is given to Harbor Offshore. Vessels that can transit the bridge, while closed, can continue to do so, ensuring they stay well clear of the operations. For conditions at the bridge mariners can contact Harbor Offshore at 707-759-0243 or 206-949-7133 or the tug "LINDA T" on VHF-FM CH 16. For further information contact the Coast Guard Bridge Office at 510-437-3516.

RIO VISTA BRIDGE- Caltrans' contractor, Harbor Offshore will be replacing submarine control and communications cables between the lift span towers of the bridge in the main navigation span. Work will be conducted 24-hours a day from 0001 on 22 May 21 through 2359 on 31 May 21. During this period the lift span of the bridge will open on signal if at least a six hour notification is given to the drawtender at 707-374-2134. The "CRANE BARGE KELSO" and tug "LINDA T" will be utilized in cable laying operations and may be spudded down in the navigation span. Divers will be in the water during operations. For the safety of navigation, operations can cease and equipment moved if a two-hour notice is given to Harbor Offshore. Vessels that can transit the bridge, while closed, can continue to do so, ensuring they stay well clear of the operations. For conditions at the bridge mariners can contact Harbor Offshore at 707-759-0243 or 206-949-7133 or the tug "LINDA T" on VHF-FM CH 16. For further information contact the Coast Guard Bridge Office at 510-437-3516.

Chart 18661

LNLM: 20/21

NORTHERN CALIFORNIA-DELTA & RIVERS-SACRAMENTO RIVER-BRIDGE

RIO VISTA DRAWBRIDGE-TRAFFIC GATE INSTALLATION-Temporary platforms are installed beneath low steel of the bridge in spans 2 and 8 reducing vertical clearance in those spans by no more than 4 feet. The upriver and downriver temporary platforms and associated support cables are lit at night with steady burning red lights (see RVBridge_PlatformCable_Lighting.pdf enclosure at the end of this notice.) At no time will the lift

NORTHERN CALIFORNIA-DELTA & RIVERS-SACRAMENTO RIVER-BRIDGE

span of the bridge be impacted. Mariners are urged to use alternate spans of the bridge. For conditions at the bridge, mariners can contact the contractor at 925-260-2104 or 925-260-1884. For further information contact the Coast Guard Bridge Office at 510-437-3516.

Chart 18661

LNM: 45/20

NORTHERN CALIFORNIA-DELTA & RIVERS-SAN JOAQUIN RIVER-BRIDGE

CROWS LANDING ROAD-Stanislaus County has begun mobilizing crews and equipment to replace the bridge. The project is anticipated to be completed by 01 Aug 23. A temporary bridge will be installed to facilitate construction. The temporary bridge will provide, at a minimum, 20 feet of horizontal clearance and 12 feet of vertical clearance at Ordinary High Water. Mariners are requested to use extreme caution when transiting the work site. For conditions at the project site mariners can contact the contractor at 916-869-8210 or 559-593-5182. For further information contact the Coast Guard Bridge Office at 510-437-3461.

LNM: 16/21

NORTHERN CALIFORNIA-DELTA & RIVERS-SAN JOAQUIN RIVER-BRIDGE

ANTIOCH BRIDGE-Work has commenced on the replacement-in-kind of all navigation lights, fog horns and RACON of the bridge. Work will take place Monday through Friday during daylight hours through 22 Feb 22. A 21' aluminum boat, the "BATES RULES" will be tied off of various piers during the work. At no time will the vessel be working in main navigation span of the bridge. To ascertain the location of the "BATES RULES" mariners can hail it on VHF-FM Channel 16 or 9, 13, or 14 or call 510-557-1507. The vessel can be moved for navigational safety if at least 15 minutes notice is given to the "BATES RULES." For further information contact the Coast Guard Bridge Office at 510-437-3516.

Chart 18661

LNM: 18/21

NORTHERN CALIFORNIA-DELTA AND RIVERS-TAYLOR SLOUGH-AGROUND VESSEL

An aground vessel has been reported in the vicinity of Taylor Slough near Bethel Island, CA. Mariners are requested to transit the area with caution. For more details or comments contact MST1 David Robey at 415-399-7440.

Chart 18660

LNM: 12/21

NORTHERN CALIFORNIA-EUREKA SLOUGH-BRIDGE

U.S. 101 HIGHWAY BRIDGE- Caltrans will be conducting dive operations inspecting various piers of the bridge 0800 to 1600, through 28 May 21. The 23 foot flat bottom scow dive vessel will have heavy equipment on deck and the divers umbilical hose may be floating or near the surface. All approaching vessels should contact "CALTRANS DIVE BOAT/SCOW" on VHF-FM CH 16 or by cell at 916-206-7604 or 916-798-7148 at least 30 minutes before transiting the bridge to ascertain the location of divers. Extreme caution should be used when passing through the bridge when divers are present. For further information, contact the Coast Guard Bridge Office at 510-437-3516.

Chart 18622

LNM: 20/21

NORTHERN CALIFORNIA-HUMBOLDT BAY-BRIDGE

SAMOA (CA ROUTE 255) BRIDGE-Caltrans will be conducting dive operations inspecting various piers in the Eureka, Middle and Samoa Channels of the bridge 0800 to 1600, through 28 May 21. The 23 foot flat bottom scow dive vessel will have heavy equipment on deck and the divers umbilical hose may be floating or near the surface. All approaching vessels should contact "CALTRANS DIVE BOAT/SCOW" on VHF-FM CH 16 or by cell at 916-206-7604 or 916-798-7148 at least 30 minutes before transiting the bridge to ascertain the location of divers. Extreme caution should be used when passing through the bridge when divers are present. For further information, contact the Coast Guard Bridge Office at 510-437-3516.

Chart 18622

LNM: 20/21

NORTHERN CALIFORNIA-HUMBOLDT BAY-DREDGE OPERATIONS

The Army Corps of Engineers will conduct dredge operations in Humboldt Bay, CA until 07 Jun 21 in the federally authorized navigation channels. The government hopper dredge ESSAYONS will be working in the harbor and monitoring VHF-FM Chan. 13 and 16. Dredged material will be disposed of at the designated offshore Humboldt Open Ocean Disposal Site (HOODS). Mariners are requested to transit the area with caution. For more details or comments contact ESSAYONS Master at 503-808-5035 or 503-808-4990.

Chart 18622

LNM: 19/21

NORTHERN CALIFORNIA-HUMBOLDT BAY-HAZARD TO NAVIGATION

On 25 Nov 20 at 1310, six 40' containers were lost overboard from the cargo vessel MSC ROMANE at 40-49-02N 124-50-06W. Mariners are requested to transit the area with caution and are encouraged to report any sightings of these containers to the nearest Coast Guard Command Center.

Chart 18620

LNM: 48/20

NORTHERN CALIFORNIA-HUMBOLDT BAY-HAZARDOUS CONDITIONS

Humboldt Bay entrance is observing a reduced deep draft limit to 34' based on a +6' tide until maintenance dredging can be performed. Hazardous conditions with breaking surf and heavy shoaling have been observed in the vicinity of Humboldt Bay Lighted Buoy 9 (LLNR8195). Mariners are requested to transit the area with caution and contact U.S. Coast Guard Sector Humboldt Bay on VHF-FM Chan. 16 for assistance. For more details or comments contact U.S. Coast Guard Sector Humboldt Bay at 707-839-6113.

Chart 18622

LNM: 50/18

NORTHERN CALIFORNIA-HUMBOLDT BAY-SUBMERGED BUOY

Two partially submerged spherical orange NOAA buoys last seen at 40-40-27N 124-28-00W in the NW corner of Eel Canyon are now missing with current location unknown. Mariners are requested to transit the area with caution and report any sightings to U.S. Coast Guard. For more details or comments contact Coast Guard Sector Humboldt Bay at 707-839-6113.

Chart 18620

LNM: 45/20

NORTHERN CALIFORNIA-MAD RIVER SLOUGH-BRIDGE

CA ROUTE 255 BRIDGE- Caltrans will be conducting dive operations inspecting various piers of the bridge 0800 to 1600, through 28 May 21. The 23 foot flat bottom scow dive vessel will have heavy equipment on deck and the divers umbilical hose may be floating or near the surface. All approaching vessels should contact "CALTRANS DIVE BOAT/SCOW" on VHF-FM CH 16 or by cell at 916-206-7604 or 916-798-7148 at least 30 minutes before transiting the bridge to ascertain the location of divers. Extreme caution should be used when passing through the bridge when

NORTHERN CALIFORNIA-MAD RIVER SLOUGH-BRIDGE

divers are present. For further information, contact the Coast Guard Bridge Office at 510-437-3516.

Chart 18622

LNLM: 20/21

NORTHERN CALIFORNIA-MONTEREY BAY-BUOY DEPLOYMENT

The Monterey Bay Aquarium Research Institute (MBARI) will deploy one research buoy on 21 May 21 and will be deployed until 25 Jun 21. The buoy will be located off Moss Landing at 36-48-54N 121-49-33W in approximately 40m of water. The buoy consists of a Danforth style anchor from the seafloor to surface and an acoustic transponder 10m above the seafloor. The buoy is round, orange, 18 inch vinyl fender and is fitted with a satellite tracking device to transmit its location back to MBARI. Mariners are requested to transit the area with caution. For more details or comments contact MBARI at 831-775-1700, or Brian Kieft at 831-334-7658, bkieft@mbari.org

Chart 18685

LNLM: 21/21

NORTHERN CALIFORNIA-OFFSHORE MONTEREY BAY-BUOY DEPLOYMENT

NOAA has deployed two research buoys at the following coordinates:

36-07-03N 125-08-00W

36-01-40N 125-06-21W

These are 3' yellow octagonal research buoys with Fl W 4s light characteristics. Mariners are requested to transit the area with caution. For more details or comments contact Danny Devereaux at 206-526-6177.

Charts: 501 18010 18020 18022

LNLM: 37/19

NORTHERN CALIFORNIA-OFFSHORE MONTEREY BAY-BUOY DEPLOYMENT

University of California, San Diego and the U.S. Army Corps of Engineers have deployed Lighted Waverider Research Buoy Station 029 (LLNR 5791) in position 37-56-12N 123-27-46W, approximately 22 nm west off Pt. Reyes, CA. The buoy is a 3' diameter sphere with an attached telemetry whip antenna and Fl (5) Y 20s light characteristic, the buoy is painted yellow and is marked "Wave Buoy". For more details or comments contact James Behrens at 858-534-3032.

Chart 18010

LNLM: 44/19

NORTHERN CALIFORNIA-OFFSHORE MONTEREY BAY-UNDERWATER OPERATIONS

Reef Check Foundation have deployed underwater equipment offshore Monterey Bay, CA within the following coordinates:

36-36-17N 121-52-46W

36-36-18N 121-52-49W

36-36-15N 121-52-50W

36-36-14N 121-52-46W

All equipment will be established until 24 Mar 24. Mariners are requested to transit the area with caution and avoid anchoring within the coordinates listed above. For more details or comments contact Dan Abbot at 510-684-7835.

Chart 18685

LNLM: 12/21

NORTHERN CALIFORNIA-POINT PINOS

Point Pinos Light (LLNR 290) emergency light is temporarily unavailable, however the main light is functioning properly. For more details or comments contact Sector San Francisco at 510-437-3454

LNLM: 50/20

NORTHERN CALIFORNIA-RICHARDSON BAY-MARINE CONSTRUCTION

Salt River Construction Corporation will be assisting with marine construction at a private residence in Richardson Bay, CA until 20 Dec 21. M/B YC42, C/B ALASKA, C/B MINK, along with the tug BRANDY BAR will be conducting operations. A mooring location will be located at 37-51-57N 122-27-54W. All vessels will monitor VHF-FM Chan. 13, 14, and 77. Mariners are requested to transit the area with caution. For more details or comments contact Rick Moseley at 415-435-1024.

Charts: 18649 18653

LNLM: 50/19

NORTHERN CALIFORNIA-SACRAMENTO RIVER-REDUCED VERTICAL CLEARANCE

Overhead power cables upstream of Sacramento River at 38-03-54N 121-47-09W have a reported reduced vertical clearance to 119.5'.

Chart 18660

LNLM: 22/16

NORTHERN CALIFORNIA-SAN FRANCISCO BAY-ANCHORAGE 8-HAZARD TO NAVIGATION

A derelict underwater electrical cable has been reported to foul anchors in Anchorage 8 near the following coordinates 37-47-35N 122-21-29W. For more details or comments contact USCG Sector San Francisco Waterways Management at SFWaterways@uscg.mil.

Chart 18649

LNLM: 02/21

NORTHERN CALIFORNIA-SAN FRANCISCO BAY-BRIDGE

DUMBARTON RAILROAD BRIDGE-The east side red pier axis light is extinguished. Estimated time of repair, unknown. For further information contact the Coast Guard Bridge Office at 510-437-3514.

Chart 18651

LNLM: 20/21

NORTHERN CALIFORNIA-SAN FRANCISCO BAY-BRIDGE

RICHMOND-SAN RAFAEL BRIDGE-Caltrans contractor has begun concrete/steel repairs and cleaning/painting of the bridge. Work is being conducted Monday through Friday, 0500 to 1700, through 01 May 23. Temporary underdeck platforms are being installed from the western shore to pier 33 and between piers 43-46 reducing vertical clearance in each span by three feet. The upstream and downstream lower edge of each temporary platform will be lighted at night with steady burning red lights (see R-SR_Bridge_Temp_Platform_Lighting.pdf at the end of this notice.) Two 160' X 50' barges and one 110' X 32' barge will be used to assist in the installation of the platforms and for the blasting and painting. One barge has been secured to pier 8 and will be left on-scene, overnight, unmanned. The outboard corners of the barge at pier 8 will be lighted at night with steady red lights. Barge "37" and barge "32" can be contacted on VHF-FM Ch. 16, 13 and 14. At no time will the work impede the east or west navigation spans or their auxiliary spans. For conditions at the bridge, mariners can contact the contractor at 860-904-8787 or 443-847-6286. For further information concerning this project contact the Coast Guard Bridge Office at 510-437-3515.

NORTHERN CALIFORNIA-SAN FRANCISCO BAY-BRIDGE

Chart 18653

LNM: 16/21

NORTHERN CALIFORNIA-SAN FRANCISCO BAY-BRIDGE

GOLDEN GATE BRIDGE-Four 54' temporary under deck platforms; one 1250' and one 1975' north of the south tower and one 550' and one 850' south of the north tower, have been installed beneath low steel of the bridge. Temporary platforms reduce vertical clearance at the bridge by no more than 14'. The bridge's maintenance travelers are in use during the project and will remain outboard of the furthest north and furthest south temporary platforms. The temporary platforms and maintenance travelers are lighted at night with all-round red lights (see PlatformLighting_GG_Bridge_18May21.pdf at the end of this notice). For navigational safety the maintenance travelers can be moved by contacting the Golden Gate Bridge at 415-923-2220. Work is being conducted Monday through Saturday, 0700-1700 and 2100-0500. For conditions at the bridge, mariners can contact the contractor at 415-716-0384. For more details or comments contact the Coast Guard Bridge Office at 510-437-3516.

Chart 18649

LNM: 20/21

NORTHERN CALIFORNIA-SAN FRANCISCO BAY-BRIDGE

SAN MATEO/HAYWARD BRIDGE-Structural repairs to the superstructure of the bridge are being conducted from 0700 to 1530, Monday through Friday, through 15 May 22. Current location of work is at piers 27, 28 and 29. At no time will work be conducted or floating equipment placed in the main navigation span of the bridge, piers 19-20. Various size barges will be used during the project, the largest being a 100' X 20' flexifloat barge. During the work day, barges will either be spudded down or tied to the bridge piers, no anchors or anchor line will be utilized. After regular working hours, the unmanned barge will be left on-site unless inclement weather is anticipated, then the barges will be spudded down at pier 12, west of the main navigation span. For the safety of navigation, the barges can be moved with one-hour advance notice. For conditions at the bridge mariners can contact Golden State Bridge, Inc., on VHF-FM Marine Radio Channels 13, 14, and 16 or by cell phone at 707-246-0725, 925-260-2104, or 925-382-7288. For more details or comments contact the Coast Guard Bridge Office at 510-219-4366.

Chart 18651

LNM: 20/21

NORTHERN CALIFORNIA-SAN FRANCISCO BAY-DETERIORATING CONCRETE PILINGS

Deteriorating concrete pilings above and below the waterline are present in the vicinity of the the south edge of Southampton Shoal Light (LLNR 5480). Mariners are requested to transit the area with caution. For more details or comments contact LT Ruth Sadowitz at 510-437-3801 or ruth.a.sadowitz@uscg.mil.

Chart 18649

LNM: 23/15

NORTHERN CALIFORNIA-SAN FRANCISCO BAY-ISLAIS CREEK-BRIDGE

THIRD STREET DRAWBRIDGE- The drawspan is secured in the closed-to-navigation position due to structural damage. The bridge provides 4ft vertical clearance above mean high water when closed. Vessels that can safely transit the bridge while in the closed position may continue to do so at any time.

Chart 18650

LNM: 49/20

NORTHERN CALIFORNIA-SAN FRANCISCO BAY-OAKLAND INNER HARBOR-SHOALING

Shoaling has been reported on the south side of Oakland Inner Harbor South Channel in the east passage through the Fruitvale Ave. Bridge. Mariners are requested to transit the area with caution and report any observed changes in shoaling conditions to the San Francisco VTS on VHF-FM Chan. 14. For more details or comments contact U.S. Coast Guard Sector San Francisco Waterways Management at 415-399-7443.

Chart 18650

LNM: 16/15

NORTHERN CALIFORNIA-SAN FRANCISCO-GEOPHYSICAL SURVEY

The USGS Pacific Coastal and Marine Science Center is conducting a series of up to five one-day near shore geophysical surveys and up to three rapid-response surveys in Monterey Bay, CA until 01 Nov 21. A bathymetric survey using a two personal watercraft, each equipped with a 200 kHz single beam echo sounder, will be used to conduct cross shore transects from within the surf zone out to 1200m from shore to document the effects of large wave events on seafloor morphology. For more details or comments contact Tim Elfers at 831-460-7479.

Charts: 18680 18685

LNM: 07/20

NORTHERN CALIFORNIA-SAN JOAQUIN RIVER-MARINE CONSTRUCTION

Shimmick Construction Company, Inc. (SCCI) is conducting marine construction for the Smith Canal Gate Project in the San Joaquin Deep Water Shipping Channel from 0600 to 1800 Monday through Saturday until 30 Nov 22. Operations will be conducted between the following coordinates:

37-57-31N 121-21-11W

37-57-25N 121-21-08W

Staging Yard

37-57-09N 121-19-55W

Mariners are requested to transit the area with caution. For more details or comments contact Tyler Shell at 510-393-0308.

Charts: 18661 18663

LNM: 28/20

NORTHERN CALIFORNIA-SAN LEANDRO BAY-BRIDGE

BAY FARM ISLAND HIGHWAY BRIDGE-The south side lower slat on the fender system is missing. Mariners are urged to transit the bridge with caution. The bridge owner is in the process of designing a replacement pier protection system. For more details or comments contact the Coast Guard Bridge Office at 510-437-3514.

Chart 18649

LNM: 37/18

NORTHERN CALIFORNIA-SAN PABLO BAY-SOUTH SLOUGH-BRIDGE

TEMPORARY BRIDGE-PG&E has installed a temporary floating bridge, in position 38-09-09N, 122-20-08W, to facilitate emergency tower repairs to the electrical grid. Mariners are urged to use caution when transiting the area. For further information mariners can contact the Coast Guard Bridge Office at 510-437-3516.

Charts: 18654 18655

LNM: 12/21

NORTHERN CALIFORNIA-SAN PABLO BAY-SUBMARINE CABLE

NORTHERN CALIFORNIA-SAN PABLO BAY-SUBMARINE CABLE

Trans Bay Cable LLC owns and operates a charted submarine cable that experiences intermittent exposures in San Pablo Bay. All vessels are advised not to anchor, use ground tackle, fish, or dredge in the vicinity of 38-03-27N 122-16-22W as this increases the risk of damage violating 47 USC 2. Mariners are requested to transit the area with caution. For more details or comments contact Trans Bay Cable Operations Center at operator@transbaycable.com or 925-427-9744.

Charts: 18654 18655

LNM: 25/20

NORTHERN CALIFORNIA-SAN PABLO BAY-SUBMERGED OBSTRUCTION

There are submerged piles partially exposed above the sediment surface south of Pinole Shoal Channel along the 30' contour between 38-03-14N 122-16-26W and 38-03-18N 122-16-15W. The piles are present along the slope of the natural shoal at heights ranging from approximately 1' to 5' above the sediment surface. For more details or comments contact Todd Muelhoefer of Coscol Petroleum Corporation at 719-520-4761.

Charts: 18654 18655

LNM: 47/17

NORTHERN CALIFORNIA-SAN RAFAEL CREEK-BRIDGE

IRWIN ST/HWY 101 OFF RAMP BRIDGE- As part of the bridge replacement project, Caltrans has installed a containment system around the existing bridge through 31 Dec 21. Mariners are requested to transit the area with caution. For more details or comments, contact the Coast Guard Bridge Office at 510-437-3461.

Chart 18654

LNM: 08/21

NORTHERN CALIFORNIA-SANTA CRUZ HARBOR-SHOALING

There are hazardous and shoaled conditions in the Santa Cruz Harbor Channel Entrance. Mariners transiting the Santa Cruz Harbor should use caution for hazardous conditions of breaking surf and shoaling in the Santa Cruz Harbor entrance that may occur during all surf and tidal conditions. Mariners are highly advised not to transit the Santa Cruz Harbor Channel unless sea and tide conditions are suitable for your vessel's draft. Mariners may view soundings on the Santa Cruz Harbor at <https://www.santacruzharbor.org/entrance-soundings>. For more details or comments contact the Santa Cruz Harbor at 831-475-6161 or VHF-FM Chan. 9 and 16.

Chart 18685

LNM: 03/21

NORTHERN CALIFORNIA-SANTA CRUZ-BUOY DEPLOYMENT

California Department of Parks and Recreation and USACE have deployed the National Data Buoy Center 46269, Station 254 waverider buoy in position 36-56-03N 122-02-02W, approximately 1 NM off Point Santa Cruz, CA. The buoy is a 3' diameter sphere with an attached telemetry whip antenna and Fl (5) Y 20s light characteristic, the buoy is painted yellow and is marked "Wave Buoy". For more details or comments contact James Behrens at 858-534-3032.

Chart 18685

LNM: 49/20

NORTHERN CALIFORNIA-SOUTHERN CALIFORNIA-MONTEREY BAY-CHANNELS ISLANDS-SUB-SURFACE OCEANOGRAPHIC INSTRUMENT MOORING

The United States Navy, Naval Postgraduate School, Oceanography Department have deployed sub-surface oceanographic instrument moorings until 01 Nov 21. These sub-surface moorings are part of the Monterey Bay and Channel Islands Sound Scape Monitoring Project. These sub-surface moorings are located at the following coordinates:

36-47-53N 121-58-34W

36-38-53N 121-54-30W

34-02-38N 121-54-30W

34-05-08N 120-31-24W

33-50-56N 120-07-06W

34-01-06N 119-19-00W

36-22-13N 122-18-53W

Mariners are requested to transit the area with caution. For more details or comments contact Keith Wycoff at 831-656-2567.

Charts: 18685 18700 18720

LNM: 48/18

NORTHERN CALIFORNIA-SUISUN BAY-BULLS HEAD CHANNEL-SHOALING

Based on a survey completed on 29 April 2021, the Bulls Head Channel is reported to have areas of shoaling east of the Benicia-Martinez Bridge. Some areas are surveyed to be 32'-33', with the channel's project depth at 35' below Mean Lower Low Water. The survey can be found at <https://www.spn.usace.army.mil/Missions/Surveys-Studies-Strategy/Hydro-Survey/Suisun-Bay-Channel/>. Mariners are requested to transit the area with caution and report any observed changes in shoaling conditions to the San Francisco VTS on VHF-FM Chan. 14. For more details or comments contact U.S. Coast Guard Sector San Francisco Waterways Management at 415-399-7443.

Chart 18656

LNM: 21/21

NORTHERN CALIFORNIA-SUISUN BAY-DIVE OPERATIONS

CECOS Group and VR Habilis will conduct dive operations in the vicinity of Military Ocean Terminal Concord (MOTCO), CA until 30 Jul 21. Operations will be conducted at 38-03-23N 122-02-24W. Two dive vessels will be on scene and monitoring VHF-FM Chan. 16. Mariners are requested to transit the area with caution. For more details or comments contact Kyle Bredehoeft 660-620-9119.

Chart 18656

LNM: 15/21

NORTHERN CALIFORNIA-SUISUN BAY-MONTEZUMA SLOUGH-LOCK CLOSURE

The California Department of Water Resources advises that it will remove the flashboards and suspend boat lock operations at the Suisun Marsh salinity control structure, located 2.2 nautical miles from the easterly end of Montezuma Slough 38-05-36N 121-53-07W, on 03 Jun 21. After 03 Jun 21, mariners are advised to use the Maintenance Channel on the east side of the slough. The boat lock will be closed to boat traffic. Signs and lights will be posted to warn vessels to avoid the boat lock. Mariners are requested to transit the area with caution. For more details or comments contact Ian Uecker at 916-574-2991.

Chart 18656

LNM: 21/21

SOUTHERN CALIFORNIA-ANAHEIM BAY-CAUSEWAY

SEAL BEACH NAVY CAUSEWAY-Construction of the causeway has begun. Work will take place Monday through Friday, 0700 to 1500 through 30 Sep

SOUTHERN CALIFORNIA-ANAHEIM BAY-CAUSEWAY

21. A 150' X 50' barge may be positioned just adjacent to the newly dredged public navigation channel. Mariners are requested to use extreme caution when transiting the area. For conditions at the project site mariners can contact the contractor at 904-502-7787. For further information contact the Coast Guard Bridge Office at 510-437-3515.

Chart 18749

LNM: 18/21

SOUTHERN CALIFORNIA-ANAHEIM BAY-SEAL BEACH-NAVIGATION CHANNEL CLOSURE

The U.S. Navy has completed the recreational channel dredging project in Anaheim Bay. The newly established channel improves navigation and access to Huntington Harbor and eliminates the previous access near the Naval Weapons Station Seal Beach docks for all recreational vessels. The new and improved navigational channel to Huntington Harbor is marked with temporary buoys to assist navigation until all improvements are complete in the Anaheim Bay. Mariners are requested to transit the area with caution and adhere to newly established Aids to Navigation. For more details or comments contact James Laughlin at 310-521-3867.

Chart 18749

LNM: 04/21

SOUTHERN CALIFORNIA-CATALINA ISLAND-BIOMASS RESEARCH

Marine BioEnergy INC. will be deploying a yellow research buoy with the characteristics of FI Y 4s at 33-28-12N 118-29-33W and will remain at this position until 30 Jun 21. Mariners are urged to transit at their slowest safe speed to minimize wake and proceed with caution. For more details or comments contact Cindy Wilcox at 818-952-6018.

Chart 18757

LNM: 44/20

SOUTHERN CALIFORNIA-CATALINA ISLAND-BUOY DEPLOYMENT

Marine BioEnergy Inc. has deployed a temporary buoy near Catalina Island at 33-28-13N 118-29-33W. This will be a 7' yellow buoy with FI Y 4s light characteristic. Mariners are urged to transit at their slowest safe speed to minimize wake, and proceed with caution after passing arrangements have been made. For more details or comments contact Cindy Wilcox at 818-653-9017 or 818-952-6018.

Charts: 18746 18757

LNM: 47/19

SOUTHERN CALIFORNIA-CATALINA ISLAND-BUOY DEPLOYMENT

Marine BioEnergy INC. has deployed a 28 inch yellow research buoy with the characteristics of FI Y 4s at 33-28-12N 118-29-33W and will remain at this position until the end of Aug 21. Mariners are requested to transit the area with caution. For more details or comments contact Cindy Wilcox at 818-952-6018.

Chart 18757

LNM: 17/21

SOUTHERN CALIFORNIA-CHANNEL ISLANDS HARBOR-MARINE CONSTRUCTION

Connolly Pacific will conduct marine construction and jetty repairs in Channel Islands Harbor, CA during daylight hours until 23 Nov 21. Two offshore cylinder can moorings with a light characteristic (FI W 2s) will be utilized outside of the navigable channel in the vicinity of Hobie Beach, Channel Islands, CA during operations. DB LONG BEACH and support tugs LARCONA or PATCONA II will be on scene monitoring VHF-FM Chan. 13, 16, and 79A. Mariners are requested to transit the area with caution. For more details or comments contact Caleb Shen 562-577-3602.

Chart 18725

LNM: 13/21

SOUTHERN CALIFORNIA-DEL MAR NEARSHORE-BUOY DEPLOYMENT

Scripps Institution of Oceanography have deployed a buoy 1200 yds off the coast of Del Mar, CA at 32-57-23N 117-16-46W. The wave buoy is a 3' diameter sphere with an attached telemetry whip antenna and a yellow light FL (5) Y 20s. The buoy is painted yellow and marked "Wave Buoy" with the phone number 858-534-3032. Mariners are requested to transit the area with caution. For more details or comments contact James Behrens at 858-534-3032.

Charts: 18740 18765

LNM: 50/19

SOUTHERN CALIFORNIA-ESTERO BLUFFS STATE PARK-SUBMERGED ANCHOR CABLE

Mariners and surfers in the vicinity of North Cayucos are advised of an anchor cable extending from the surf zone to the grounded F/V POINT ESTERO in the vicinity of Estero Bluffs State Park 35-26-51N 120-55-09W. The anchor cable is marked with multiple orange fenders with the end of cable connected to the vessel. For more details or comments contact Coast Guard Sector LA/LB Command Center at 310-521-3815.

Chart 18703

LNM: 43/17

SOUTHERN CALIFORNIA-IMPERIAL BEACH-WAVERIDER BUOY

University of California, San Diego and the U.S. Army Corps of Engineers have deployed a waverider buoy in position 32-34-10N 117-10-08W, approximately 2 NM off Imperial Beach, CA. The buoy is a 3' diameter sphere with an attached telemetry whip antenna and FI (5) Y 20s light characteristic, the buoy is painted yellow and is marked "Wave Buoy". For more details or comments contact James Behrens at 858-534-3032.

Chart 18765

LNM: 35/18

SOUTHERN CALIFORNIA-LONG BEACH-DREDGE OPERATIONS

Curtin Maritime will conduct maintenance dredge operations within the Los Angeles River Estuary (LARE) and Port of Long Beach (POLB) 24 hrs per day 7 days a week until 30 May 21. Material will be dredged from within LARE and POLB and will be transferred to LA-2 Ocean Disposal Site. DB IRONBOUND, DB BEN WESTON, along with tugs BERNARDINE C, SEANA C, KELLY C BABY T, and two split hull scows will be conducting operations. All vessels will be monitoring VHF-FM Chan. 01A, 13, and 14. Mariners are requested to transit the area with caution. For more details or comments contact Project Manager Mike Patrica at 630-418-1190.

Charts: 18749 18751

LNM: 21/21

SOUTHERN CALIFORNIA-MISSION BAY-SAN DIEGO-MARINE EVENT

Fireworks America will sponsor the fireworks display at SeaWorld every Friday and Saturday until 29 May 21 as well as on 30 May 21 from 2000-2010. The event will consist of a fireworks shoot from a barge located in Mission Bay south of Fiesta Island. Mariners are requested to transit the area with caution. For more details or comments contact Julie Andrews at 619-938-8277.

Charts: 18765 18773

LNM: 17/21

SOUTHERN CALIFORNIA-MORRO BAY-DREDGE OPERATIONS

SOUTHERN CALIFORNIA-MORRO BAY-DREDGE OPERATIONS

The Army Corps of Engineers is conducting dredge operations in Morro Bay Harbor, CA until 01 June 21. The following aids will be temporarily discontinued:

Morro Bay Channel LB 4 (LLNR 3855)
Morro Bay Channel LB 4A (LLNR 3856)
Morro Bay Channel LB 5 (LLNR 3850)
Morro Bay Channel LB 6 (LLNR 3865)
Morro Bay Channel LB 7 (LLNR 3870)
Morro Bay Channel LB 8 (LLNR 3875)
Morro Bay Channel LB 10 (LLNR 3880)

Dredge operations will be conducted by the dredge Yaquina (call sign AEPD) and will monitor VHF-FM Chan. 13 and 16. Mariners are requested to transit the area with caution. For more details or comments contact Army Corp of Engineers Los Angeles district at 213-452-4026.

Chart 18703

LNLM: 18/21

SOUTHERN CALIFORNIA-NEWPORT HARBOR-TEMPORARY ANCHORAGE

The City of Newport Beach Harbor Department will establish a temporary anchorage until 07 Sep 21 that will be bounded by the following coordinates:

A-33-37-06N 117-55-36W
B-33-37-07N 117-55-35W
C-33-37-04N 117-55-30W
D-33-37-01N 117-55-33W

A Newport Beach Harbor Department vessel will be deploying four yellow 42 inch spherical buoys to mark the anchorage. All vessels conducting the buoy deployment will monitor VHF-FM Chan. 19. Mariners are requested to transit the area with caution. For more details or comments contact the City of Newport Beach Harbor Department at 949-270-8159.

Chart 18754

LNLM: 19/21

SOUTHERN CALIFORNIA-OFFSHORE LONG BEACH-OCEANOGRAPHIC OPERATIONS

The Scripps Institution of Oceanography R/V ROGER REVELLE will conduct oceanographic operations until 27 May 21 within a 75NM radius centered at 32-00-00N 122-00-00W. Operations include deployment and recovery of the following:

1-Yellow drift buoy Fl W 2s, 5 ft tall from the waterline and 3.5ft in diameter. Buoy will drift with tethered instrument array deployed to 150 meters depth.
2-Yellow Drifting wave buoys Fl W 5s, 1m in diameter with instrument string deployed vertically below the buoys to 500 meters depth.
3-Unmanned maritime surface vehicles which are yellow or dark brown surfboard-sized with several masts extending up to 1m above the surface with a flag, radar reflector and a light Fl Y 4s.

ROGER REVELLE will be monitoring VHF-FM chan. 13 and 16. Mariners are requested to transit the area with caution. For more details or comments contact Eric Buck at 858-534-5568.

Chart 18022

LNLM: 17/21

SOUTHERN CALIFORNIA-OFFSHORE OCEANSIDE-HELICOPTER OPERATIONS

RSG Rotorcraft Services Group will be conducting helicopter operations offshore Oceanside, CA at 33-10-00N 117-35-00W and 33-09-00N 117-28-00W. Helicopter N549QC will be lowering a submersible sonar to the depths of 1640 ft. There will be a rescue boat on scene to provide a barrier to the cable. Mariners are requested to transit the area with caution. For more details or comments contact Craig Werley at 607-821-9542.

Chart 18746

LNLM: 51/20

SOUTHERN CALIFORNIA-OFFSHORE POINT CONCEPTION-BUOY DEPLOYMENT

NOAA Pacific marine Environmental Lab have deployed a NOAA GPS buoy offshore Point Conception, CA at 34-27-24 N 120-40-49W. The buoy is a 3' yellow conical buoy with a Fl (4) Y 20s light characteristic. For more details or comments contact Chris Meinig at 206-526-6177.

Charts: 18700 18720 18721

LNLM: 42/20

SOUTHERN CALIFORNIA-OFFSHORE SANTA MONICA BAY-BUOY DEPLOYMENT

Scripps Institution of Oceanography have deployed a buoy off Santa Monica Bay at 33-51-35N 118-38-27W. Station 028-Santa Monica Bay-NDBC 46221 is a 3' diameter sphere with an attached telemetry whip antenna and a yellow light Fl Y 5(20)s. The buoy is painted yellow and marked "Wave Buoy" with the phone number 858-534-3032. Mariners are requested to transit the area with caution. For more details or comments contact James Behrens at 858-534-3032.

Chart 18774

LNLM: 48/20

SOUTHERN CALIFORNIA-POINT CONCEPTION-WAVERIDER BUOY

University of California, San Diego and the U.S. Army Corps of Engineers have deployed a waverider buoy (Station 222-Santa Lucia Escarpment) in position 34-46-00N 121-29-48W, approximately 54 nm northwest of Point Conception, CA. The buoy is a 3' diameter sphere with an attached telemetry whip antenna and Fl (5) Y 20s light characteristic, the buoy is painted yellow and is marked "Wave Buoy". For more details or comments contact James Behrens at 858-534-3032.

Chart 18700

LNLM: 41/18

SOUTHERN CALIFORNIA-POINT CONCEPTION-WAVERIDER BUOY

University of California, San Diego and the U.S. Army Corps of Engineers have deployed a waverider buoy (Station 071-Harvest Buoy) in position 34-27-06N 120-46-48W, approximately 16 nm west of Point Conception, CA. The buoy is a 3' diameter sphere with an attached telemetry whip antenna and Fl (5) Y 20s light characteristic, the buoy is painted yellow and is marked "Wave Buoy". For more details or comments contact James Behrens at 858-534-3032.

Charts: 18700 18720 18721

LNLM: 41/18

SOUTHERN CALIFORNIA-POINT MUGU-BUOY DEPLOYMENT

Scripps Institution of Oceanography has deployed an atmospheric sampling buoy south of Point Mugu, CA in position 34-03-12N 119-09-47W. The yellow buoy will be exposed 12' above the waterline and will be flashing FL 1 Y 4s. For more details or comments contact Lisa Hazard at 858-822-2873.

SOUTHERN CALIFORNIA-POINT MUGU-BUOY DEPLOYMENT

Charts: 18720 18725

LNM: 26/18

SOUTHERN CALIFORNIA-PORTS OF LOS ANGELES/LONG BEACH-CERRITOS CHANNEL-BRIDGE

SCHUYLER HEIM BRIDGE-Construction of the replacement bridge is complete. All construction materials have been removed from the waterway. The replacement bridge provides 75' of horizontal clearance and 45' of vertical clearance at mean high water to low steel. For more information contact the Coast Guard Bridge Office at 510-437-3516.

Chart 18749

LNM: 10/21

SOUTHERN CALIFORNIA-PORTS OF LOS ANGELES/LONG BEACH-LA/LB HARBOR-BRIDGE

VINCENT THOMAS BRIDGE-Painting of the underdeck of the bridge continues. The 180' long platform has entered the main navigation span west of centerline and the vertical clearance of the bridge has been reduced by 4 feet. Once work is completed in a section the temporary platform move east until it reaches just west of centerline in Nov 21. The upstream and downstream corners and every 50' along the upstream and downstream side of the platform will be lighted at night with steady burning red lights (see V_Thomas_Platform_Lighting1.pdf at the end of this notice). Work will take place during daylight hours, Monday through Friday. For conditions at the bridge mariners can contact 213-479-4138, 213-479-1144 or 310-261-9552. For more details or comments contact the Coast Guard Bridge Office at 510-437-3516.

GERALD DESMOND BRIDGE REPLACEMENT PROJECT-Underdeck platforms have been installed to conduct finishing work on the replacement bridge. The platforms are above low steel of the existing being replaced bridge. There is no reduction in vertical clearance in the navigation channel. For conditions at the work site, mariners can contact the contractor via marine radio on VHF-FM CH 13 and 79 or by cell at 424-230-9925. For more details view the website, www.NewGDBridge.com/Waterway, or contact the Coast Guard Bridge Office at 510-437-3516.

Chart 18749

LNM: 51/20

SOUTHERN CALIFORNIA-SAN CLEMENTE ISLAND-SAFETY ZONES

Mariners operating in the vicinity of San Clemente Island are reminded of the restricted waterway access surrounding San Clemente Island (33 CFR 165.1131; 33CFR 165.1141). Since the inception of the regulations, numerous safety zone violations have been processed by Coast Guard Sector San Diego. Safety Zone Incursions put the public at risk and cause costly and unnecessary training delays, as well as range cancellations. Violators of the San Clemente Island Safety and Security Zones are subject to monetary penalties. Criminal penalties may also be issued for repeated Safety and/or Security Zone violations. Failure to comply with the federal regulations could result in civil penalties of up to \$90,901.00. Furthermore, if a mariner holds a Merchant Mariner Credential, suspension or revocation action may be pursued against the mariner's credential. For more details see MSSB 02-16 SCI Safety Zone.pdf in the enclosure section.

Chart 18762

LNM: 41/16

SOUTHERN CALIFORNIA-SAN DEIGO BAY-MARINE EVENT

The Cortez Racing Association (CRA) will sponsor the CRA Crown Cup on 05 June 21 from 1000 to 1700. The regatta will consist of 50 sailboats starting near San Diego Bay Channel Lighted Buoy 30 (LLNR 2005), sailing courses around South San Diego Bay, and end back at buoy 30. Mariners are requested to transit the area with caution. For more details or comments contact Dale Greaney at 760-470-1730.

Chart 18773

LNM: 21/21

SOUTHERN CALIFORNIA-SAN DIEGO BAY-BRIDGE

CORONADO BAY BRIDGE MAINTENANCE-Scaffolding installed between piers 11-12, 12-13, and 13-14, reduces vertical clearance by more than 8'. The upstream and downstream lower edges of the scaffolding are lighted at night with red lights. For more details or comments contact the Coast Guard Bridge Office at 510-437-3461.

Charts: 18772 18773

LNM: 13/20

SOUTHERN CALIFORNIA-SAN DIEGO BAY-CORONADO ROADS-MARINE EVENT

The San Diego Yacht Club will sponsor the San Diego Olympic Classes Regatta from 11-13 June 21 from 1100 to 1600. The regatta will consist of 50 sailboats sailing courses around Coronado Roads. Mariners are requested to transit the area with caution. For more details or comments, contact Jeff Johnson at 619-758-6310.

Chart 18773

LNM: 21/21

SOUTHERN CALIFORNIA-SAN DIEGO BAY-MARINE CONSTRUCTION

R.E. Staite Engineering Inc. will conduct marine construction at NASSCO Berth 07 and Berth 08 at position 32-41-35N 117-09-03W until 01 Jul 21. Vessel DB PALOMAR, RES 180, along with push boat JEANIE R in conjunction with tug CUYAMACA will conduct operations. All vessels will monitor VHF-FM Chan 16. Mariners are requested to transit at lowest safe speed to minimize wake and proceed with caution after passing arrangements have been made. For concerns or comments contact project manager Erick Myers at 619-233-0178.

Charts: 18772 18773

LNM: 52/20

SOUTHERN CALIFORNIA-SAN DIEGO BAY-MARINE CONSTRUCTION

R.E. Staite Engineering Inc. will conduct marine construction until 20 Jun 22 in San Diego Bay at position 32-41-24N 117-14-04W. Dredge DB PALOMAR, RES 80, RES spud barge, Tug KILEEN, along with assist boats JOHN DRAKE and JEANNIE R will be on scene monitoring VHF-FM Chan. 16. Mariners are requested to transit the area with caution. For more details or comments contact Robbin Pepper at 619-524-8532 or Casey Wilson at 619-233-0178.

Charts: 18772 18773

LNM: 08/21

SOUTHERN CALIFORNIA-SAN DIEGO BAY-SAN DIEGO-MARINE EVENT

The Cortez Racing Association (CRA) will sponsor the CRA Beer Can Series Regatta every Wednesday until 28 Jul 21 from 1600-2000. The regatta will consist of 125 sailboats participating in North San Diego Bay, CA. The regatta will race a course in San Diego Bay, starting and finishing at Harbor Island. Mariners are requested to transit the area with caution. For more details or comments contact Dale Greaney at 760-470-1730.

Chart 18773

LNM: 20/21

SOUTHERN CALIFORNIA-SAN DIEGO RIVER-BRIDGE

WEST MISSION BAY DRIVE BRIDGE-The City of San Diego is replacing the existing bridge. A temporary work trestle, providing a vertical clearance of

SOUTHERN CALIFORNIA-SAN DIEGO RIVER-BRIDGE

8' over Mean Sea Level and open channels between silt curtains, is in place. Scheduled completion date of the bridge replacement project is November 2022. Mariners are urged to use caution while navigating the replacement bridge work site. For more details or comments contact the Coast Guard Bridge Office at 510-437-3461.

Chart 18765

LNM: 34/19

SOUTHERN CALIFORNIA-SAN DIEGO-OCEANOGRAPHIC OPERATIONS

The Scripps Institution of Oceanography research vessel ROBERT GORDON SPROUL (Call Sign WSQ-2674) will conduct surface to floor oceanographic operations within 1 NM of 32-40-00N 117-23-00W until 28 May 21. During over-the-side operations, R/V ROBERT GORDON SPROUL will be restricted in ability to maneuver and all traffic is requested to give a wide berth. R/V ROBERT GORDON SPROUL will monitor VHF-FM Chan. 13 and 16. Mariners are requested to transit the area with caution. For more details or comments contact Eric Buck at 858-534-5568.

Chart 18765

LNM: 19/21

SOUTHERN CALIFORNIA-SAN DIEGUITO RIVER-BRIDGE

CAMINO DEL MAR BRIDGE-Portions of a pipeline off the eastern overhang of the bridge will be replaced. Work will take place Monday through Friday, 0700 to 1600, through 26 May 21. A Bridgeworker Type II inspection bucket will be utilized to conduct the work from the roadway. When no active work is being conducted and at the end of each workday, the inspection bucket will be removed from the side of the bridge. There will be no in-water equipment used during this project. Mariners are urged to use caution while transiting the bridge. For further information contact the Coast Guard Bridge Office at 510-219-4366.

Chart 18740

LNM: 10/21

SOUTHERN CALIFORNIA-SAN NICHOLAS ISLAND-ATMOSPHERIC BUOY

Naval Air Systems Command has deployed an atmospheric sampling buoy in position 33-15-30N 119-35-58W. The yellow buoy extends 10 ft above the waterline and is 4 ft in diameter, it is flashing F1 Y 4s. For further details or comments contact Kyle Edwards at 805-989-0672 or Robi Garcia at 805-989-5040.

Chart 18740

LNM: 18/20

SOUTHERN CALIFORNIA-SANTA MONICA-BUOY DEPLOYMENT

A Waverider buoy has been deployed 1 NM South of Topanga Beach in position 34-01-19N 118-34-42W in 65 ft of water. The buoy will be deployed indefinitely. The buoy is operated by Scripps Institute of Oceanography. The buoy is a 3 ft diameter sphere with an attached telemetry whip antenna and a light characteristic of Fl Y (5+1)20s. The buoy is painted yellow and marked "Wave Buoy" with the phone number 858-534-3032. For further comments or details contact James Behrens at 858-534-3032.

Chart 18744

LNM: 34/20

SECTION VIII - LIGHT LIST CORRECTIONS

An Asterisk *, indicates the column in which a correction has been made to new information

(1) No.	(2) Name and Location	(3) Position	(4) Characteristic	(5) Height	(6) Range	(7) Structure	(8) Remarks
------------	--------------------------	-----------------	-----------------------	---------------	--------------	------------------	----------------

None

PUBLICATION CORRECTIONS

ANNOUNCEMENT – U.S. Coast Pilot® 7 and U.S. Coast Pilot® 10 - NEW EDITIONS – Spring 2020

U.S Coast Pilot 7 will be divided into two editions in the spring 2020 due to its large size. The following are the projected new editions that will be issued on the same date and ready for free download and weekly updates on June 9, 2020, at nauticalcharts.noaa.gov/publications/coast-pilot/index.html.

PUBLICATION–National Oceanic Atmospheric Administration (NOAA) – U.S. Coast Pilot 7, Pacific Coast: California 52nd Edition, 2020

PUBLICATION–National Oceanic Atmospheric Administration (NOAA) – U.S. Coast Pilot 10, Pacific Coast: Oregon, Washington, Hawaii and Pacific Islands 1st Edition, 2020

Only Print-on-Demand bound copies are available for purchase; visit nauticalcharts.noaa.gov/publications/print-agents.html#coast-pilot

For any questions or comments; visit nauticalcharts.noaa.gov/customer-service/assist/

NOAA Office of Coast Survey's Nautical Publications Branch
April 2020

LNM: 18/20

ENCLOSURES

REPORT OF DELAY AT DRAWBRIDGE

[Delay_Report_11-2017.pdf](#)

Use link above to Report a Delay at a Drawbridge.

LNLM: 06/07

NORTHERN CALIFORNIA-OFFSHORE MONTEREY BAY-MONTEREY BAY NATIONAL MARINE SANCTUARY

[NATIONAL MARINE SANCTUARY.pdf](#)

see link above.

LNLM: 20/21

NORTHERN CALIFORNIA-CORTE MADERA CREEK-BRIDGE

[BonAirRd_Trestle.pdf](#)

See link above for Bon Air Rd Temporary Trestle Navigation Channel.

LNLM: 29/18

NORTHERN CALIFORNIA-DELTA & RIVERS-SACRAMENTO RIVER-BRIDGE

[RVBridge_PlatformCable_Lighting.pdf](#)

RIO VISTA DRAWBRIDGE-See enclosure above for temporary platform location and lighting.

LNLM: 22/20

SAN CLEMENTE ISLAND-SAFETY ZONES

[San Clemente Safety Zone.pdf](#)

See link above for Maritime Safety and Security Bulletin 001-19.

LNLM: 49/19

NORTHERN CALIFORNIA-SAN FRANCISCO BAY-BRIDGE

[PlatformLighting_GG_Bridge_18May21.pdf](#)

GOLDEN GATE BRIDGE-Temporary Platform Location and Lighting revised 18 May 21.

LNLM: 20/21

NORTHERN CALIFORNIA-DELTA & RIVERS-AMERICAN RIVER-BRIDGE

[CA_RT_160_PierScourProtection.pdf](#)

DOWNSTREAM CA ROUTE 160 BRIDGE-See link above for pier rock slope scour protection details.

LNLM: 42/20

NOAA DISCONTINUE NOTICE FOR TIDE TABLE AND CURRENT TABLE

[NOAA Discontinue Notice.pdf](#)

See enclosure above.

LNLM: 45/20

NORTHERN CALIFORNIA-SAN FRANCISCO BAY-BRIDGE

[R-SR_Bridge_Temp_Platform_Lighting.pdf](#)

RICHMOND-SAN RAFAEL BRIDGE- See link above for temporary underdeck platform lighting.

LNLM: 15/21

ARIZONA-COLORADO RIVER-BRIDGE

[Cibola_Alternate_Channel.pdf](#)

CIBOLA FARMERS BRIDGE- See link above for temporary underdeck platform lighting and alternate navigation channel lighting.

LNLM: 37/20

SOUTHERN CALIFORNIA- DANA POINT TO POINT ARGUELLO - VOLUNTARY SPEED REDUCTION

[VSRMap2021_SC.pdf](#)

See link above.

LNLM: 15/21

NORTHERN CALIFORNIA-SAN FRANCISCO APPROACH-SPEED REDUCTION

[VSRMap2021_SF.pdf.pdf](#)

see link above.

LNLM: 15/21

VESSEL CYBERSECURITY ALERT-LOS ANGELES-LONG BEACH

[Vessel Cybersecurity Alert.pdf](#)

See enclosure link above.

LNM: 07/21

NORTHERN CALIFORNIA-CORTE MADERA CREEK-BRIDGE

[TempPlatform_CorteMaderaCreek.pdf](#)

U.S. 101 HIGHWAY BRIDGE-See link above for temporary platform location and lighting.

LNM: 18/21

NORTHERN CALIFORNIA-SAN FRANCISCO-HAZARD TO NAVIGATION

[Commercial Fishing Vessel Hazard.pdf](#)

see link above.

LNM: 51/20

SOUTHERN CALIFORNIA-PORTS OF LOS ANGELES/LONG BEACH-LA/LB HARBOR-BRIDGE

[V_Thomas_Platform_Lighting1.pdf](#)

See link above for platform lighting for Vincent Thomas Bridge.

LNM: 28/19

THE LOCAL NOTICE TO MARINERS IS AVAILABLE ON THE WORLD WIDE WEB AT [HTTPS://WWW.NAVCEN.USCG.GOV](https://www.navcen.uscg.gov)

T. L. Conner,
U.S. Coast Guard
Acting Chief Waterways Management Branch

MARINE SAFETY/SECURITY INFORMATION BULLETIN (MSIB) 21-01



10 May 2021

U. S. Coast Guard Sector San Francisco
Department of Homeland Security

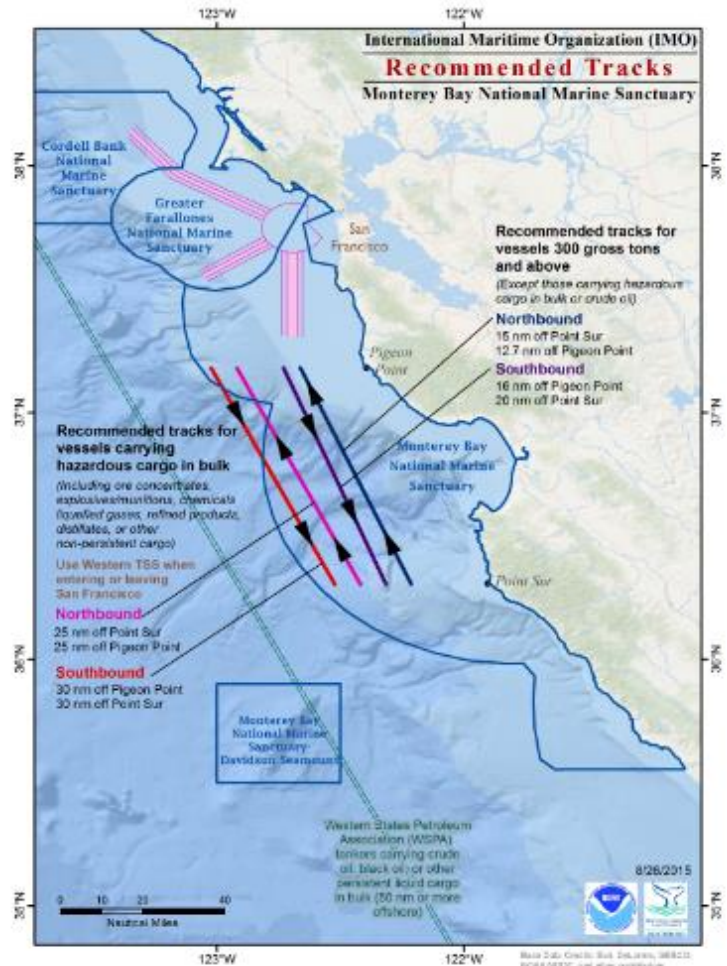


IMO Recommended Tracks in Monterey Bay National Marine Sanctuary

US Coast Guard, NOAA and the International Maritime Organization (IMO) established Recommended Tracks in NOAA's Monterey Bay National Marine Sanctuary (MBNMS) in 2000 to enhance the safety and navigation of large vessels (over 300 gross tons) and oil tankers transiting through the sanctuary, as well as to protect sensitive marine environments. Use of the IMO Recommended Tracks will reduce the risk of a spill or collision in a national marine sanctuary and allow a rescue tug to respond should the ship have an emergency. It is recommended that laden tankers transit 50 miles offshore and use the western TSS when entering or leaving San Francisco.

Exceptions may occur including avoidance of buoys, inclement weather and mechanical issues, yet without extenuating circumstances, USCG and NOAA anticipate oil tankers and cargo vessels are aware of and use the IMO Recommended Tracks.

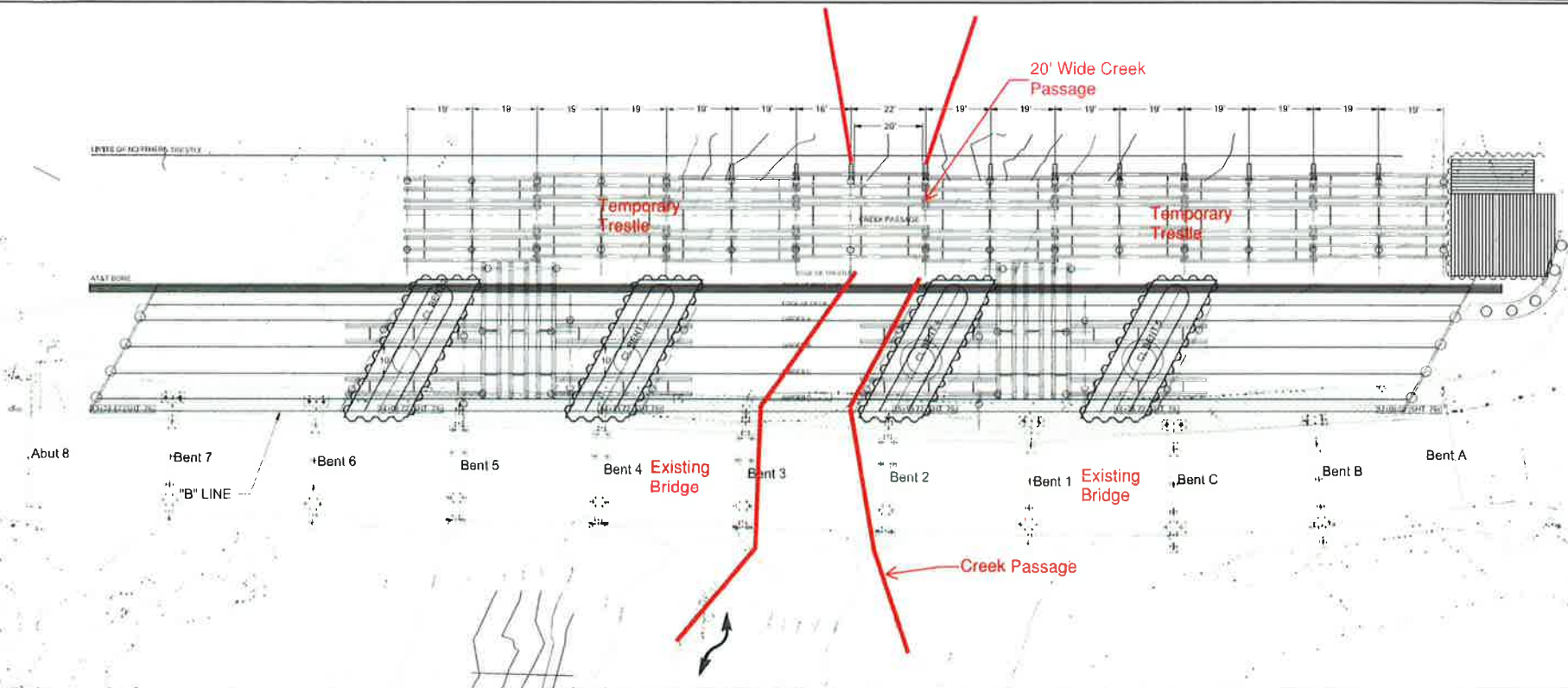
If a vessel is not permitted to enter the Port of San Francisco (SF) for anchorage immediately, it's strongly encouraged vessels stay offshore and west of the IMO Recommended Tracks while waiting for entry into the SF Traffic Separation Scheme (TSS).



Compliance with the IMO Recommended Tracks and this Bulletin will reduce the risk of an incident or marine casualty occurrence in a sensitive marine environment. If you have any questions, please contact the Sector San Francisco Waterways Safety Branch Chief, LT Anthony Solares, at (415) 399-3585.

M. B. BYRD
Captain, U. S. Coast Guard
Captain of the Port

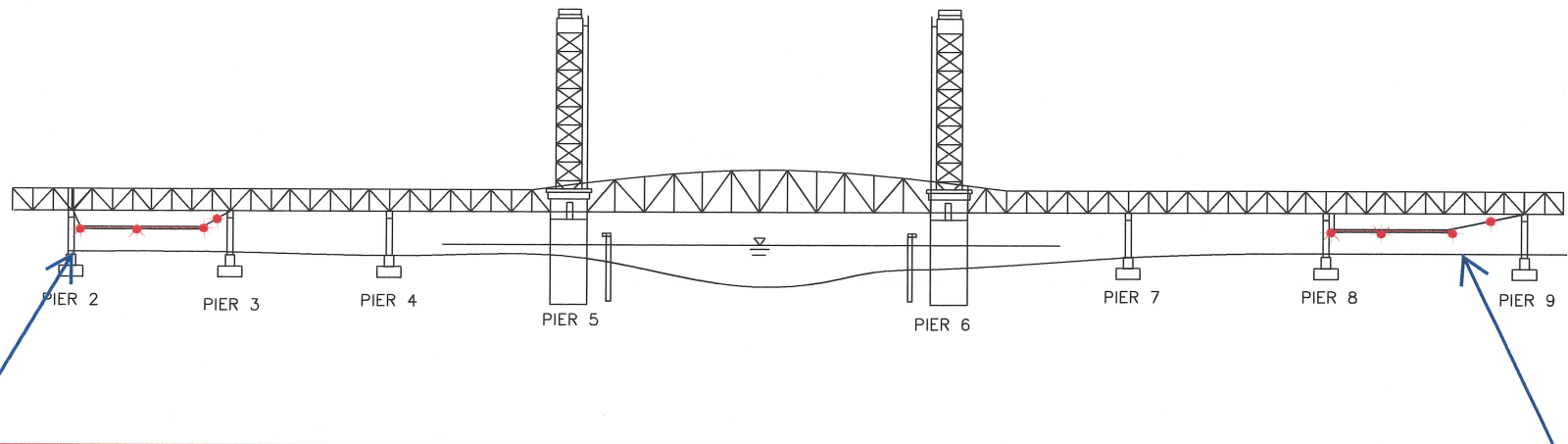
Bon Air Rd Bridge Replacement Project Mile 2.2, Corte Madera Creek



Cofferdams and a temporary trestle will be installed to facilitate construction of the replacement bridge. The temporary trestle will provide a center creek navigation channel with at least 20 feet of horizontal clearance and 3 feet of vertical clearance, from mean high water to the lowest hittable portion of the trestle, for waterway users. Mariners are urged to use extreme caution when transiting the construction site.

Temporary Underdeck Platform Lighting

Rio Vista Bridge Mile 12.8, Sacramento River



Two temporary platforms, and associated support cables, are installed beneath low steel of the bridge in span 2 and 8 and reduces vertical clearance in those spans by no more than 4 feet. The lower 4 corners and midpoint of each platform will be lighted at night with steady burning red lights, visible at 2,000 yards from approaching vessels. The support cable will be lighted with red lights every 50 feet. Mariners are requested to use alternate or main span of the bridge while these temporary platforms are in place.

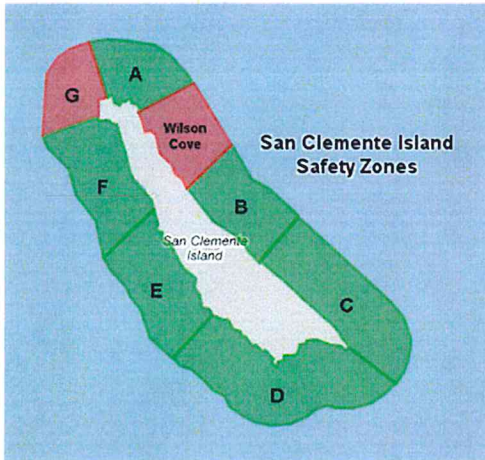
Maritime Safety and Security Bulletin: 001-19

Effective Date: November 1, 2019



U.S. Coast Guard Sector San Diego
2710 North Harbor Drive
San Diego, CA 92101
Phone: (619) 278-7656
Fax: (619) 278-7235

SAN CLEMENTE ISLAND LIMITED ACCESS ADVISORY



Mariners operating in the vicinity of San Clemente Island are reminded of the **restricted** waterway access surrounding San Clemente Island according to Title 33, Code of Federal Regulations (CFR) Part 165.1131 and 33 CFR 165.1141).

Since the inception of the regulations, Coast Guard Sector San Diego has processed numerous safety zone violations. Safety Zone incursions put the public at risk and cause costly and unnecessary training delays, as well as range cancellations. Violators of the San Clemente Island Safety and Security Zones are subject to monetary penalties. Criminal penalties may also be issued for repeated Safety and/or Security Zone violations. Failure to comply with the federal regulations could result in civil penalties of up to \$94,219 under 46 USC 70036(a). Furthermore, if a mariner holds a Merchant Mariner Credential, suspension or revocation action may be

pursued against the mariner's credential.

San Clemente Island is a top strategic Department of Defense military training facility. Dangerous naval activities occur weekly to ensure deployable military forces are trained for worldwide missions (e.g. small arms training, ground and air explosive ordinance training). Mariners conducting operations around San Clemente Island must abide by Federal regulations that apply to the three NM radius around the island. Eight zones comprise the Safety and Security Zones. Restriction times are based on U.S. Navy live fire exercises. Wilson Cove Security Zone and Zone G of the Safety Zones are permanently closed. Mariners wishing to transit through Zone G must have preapproval from San Clemente Island. The U.S. Navy makes every effort to maintain a schedule in advance and minimize the restrictions to the public for water access around the island. Periods of enforcement can be found at <https://www.scisland.org>. Restricted access areas and times are highlighted in red and listed in the associated website chart. If a Safety Zone section is green, mariners may access the waters. Mariners are advised to contact San Clemente Island via call sign "KRAKEN" on VHF CH 82A, or call Coast Guard Sector San Diego Joint Harbor Operations Center on VHF CH16, or at (619) 278-7033 or 7656, to verify real time status of the restricted waters.

If you would like more information about the Security and Safety zones surrounding San Clemente Island, please contact the Coast Guard Sector San Diego Waterways Management Division at 619-278-7656 or by email at D11MarineEventsSD@uscg.mil

Sincerely,

A handwritten signature in blue ink, appearing to read "T.J. Barelli".

T.J. BARELLI
Captain, U. S. Coast Guard
Captain of the Port San Diego

**U.S. COAST GUARD
REPORT OF DELAY AT DRAWBRIDGE
PER 33 CFR 117.5**

BRIDGE NAME: _____ DATE: _____

MILE : _____ WATERWAY: _____

1. Name/ Type of Vessel: _____ Direction of Travel : _____

2. Vessel Owner (Name): _____

(Address): _____

3. Name of Pilot (if applicable): _____

(Address): _____

4. Time vessel signaled for bridge opening: _____

5. Location of vessel when signal was given: _____

6. Time and location of vessel when delay began: _____

7. Method of signal for bridge opening: () Radio () Sound () Visual.

(If sound or visual signal was used, specify: _____)

8. Time bridge operator acknowledged signal: _____

9. Method of bridge operator acknowledgement: () Radio () Sound () Visual

(If sound or visual signal was used, specify: _____)

10. Did bridge operator acknowledgement indicate the bridge,

() Could be opened immediately?

() Could not be opened immediately?

11. If land traffic crossed the bridge:

Time land traffic started across the bridge _____

Time land traffic stopped crossing the bridge _____

Did land traffic stop on the bridge? _____

Duration land traffic stopped on the bridge _____

12. Time drawbridge opened for navigation _____

13. Additional comments:

I certify the above information is true to the best of my knowledge and understand this statement may be used by the U.S. Coast Guard in levying fines against the bridge owner.

Signature _____

Telephone _____

Mariners may complete and return to:

Commander (dpw)

Fax: (510) 437-5836

Email: Carl.T.Hausner@uscg.mil

Eleventh Coast Guard District

Coast Guard Island, Building 50-2

Alameda, CA 94501-5100

Attn: Bridge Office

Questions? Please contact: Carl Hausner, Bridge Administrator, Eleventh Coast Guard District

Office: (510) 437-3516

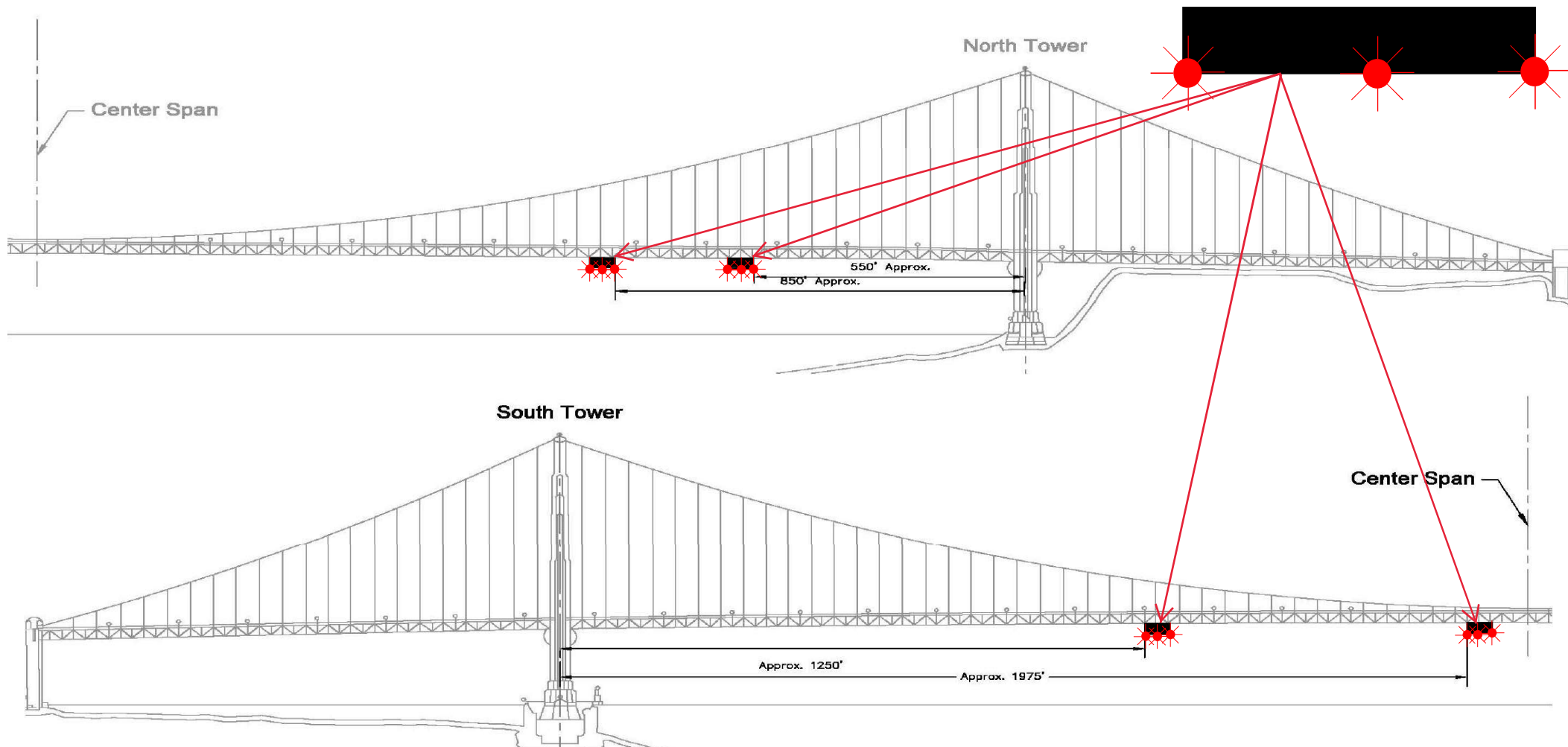
Cell: (510) 219-4366

Mariners are reminded not to require bridge openings for appurtenances nonessential to navigation, per 33 CFR 117.11

Temporary Access Platforms

Golden Gate Bridge, mile 2.5, San Francisco Bay

Revised 18 May 21



Four 54 ft wide temporary platforms are installed in the main span below low steel of the bridge, three south of the north tower and one north of the south tower, reducing vertical clearance by no more than 14 feet. The upstream and downstream lower edges of the temporary platform will be lighted at night with steady burning red lights visible at 2,000 yards by approaching vessels.

Pier Scour Replacement Downstream CA Route 160 Bridge, mile 2.0, American River

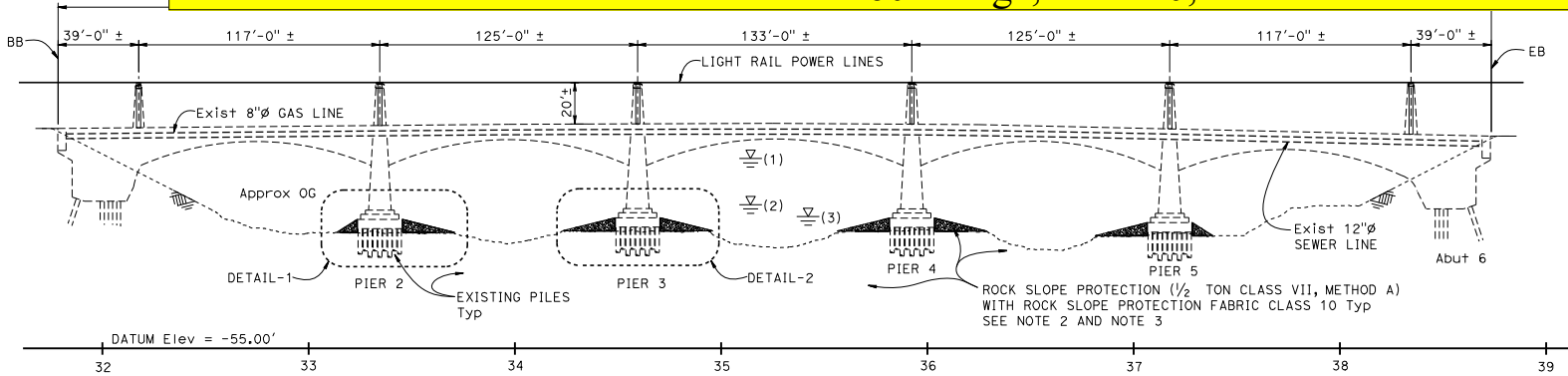
POST MILES	SHEET	TOTAL
TOTAL PROJECT	NO.	SHEETS
4.5/5.7, R44.5	174	175

REGISTERED CIVIL ENGINEER DATE 6-15-19

PLANS APPROVAL DATE 6-17-19

DAVID A. ROMERO
No. 61240
Exp. 06-30-19
CIVIL
STATE OF CALIFORNIA

THE STATE OF CALIFORNIA OR ITS OFFICERS OR AGENTS SHALL NOT BE RESPONSIBLE FOR THE ACCURACY OR COMPLETENESS OF SCANNED COPIES OF THIS PLAN SHEET.



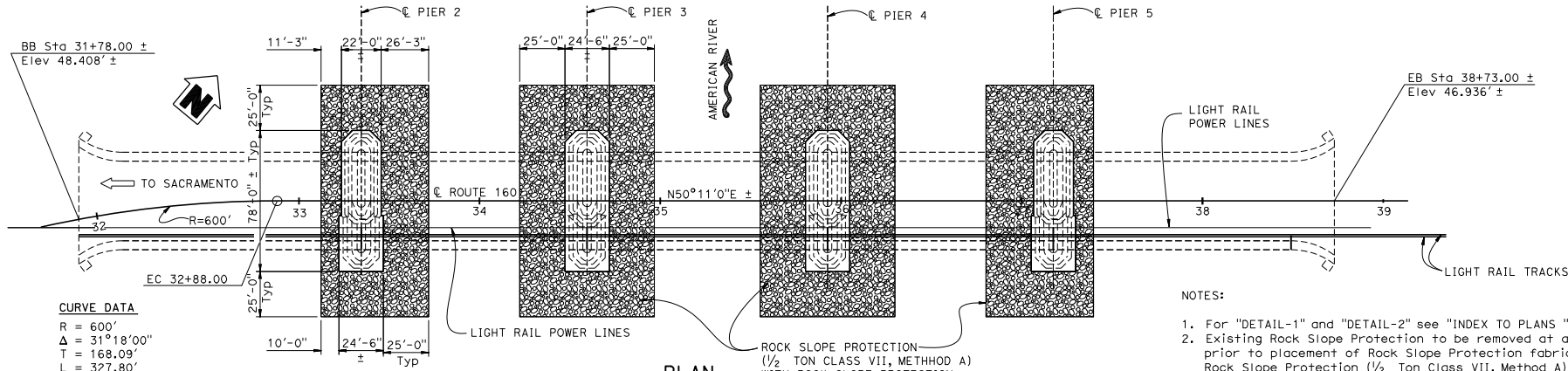
ELEVATION
1" = 30'

- LEGEND:**
- ▽ (1) High water mark during A 100 year Storm 37.0' ±
 - ▽ (2) High water mark during Construction window July 15th through October 15th = 14.66' ±
 - ▽ (3) Low water mark during Construction window July 15th through October 15th = 8.86' ±

- Existing Structure
- ▨ Half Ton Rock Slope Protection (1/2 Ton Class VII, Method A)

QUANTITIES

REMOVE ROCK SLOPE PROTECTION	LUMP	SUM
ROCK SLOPE PROTECTION (1/2 TON, CLASS VII, METHOD A) (CY)	4,000	CY
ROCK SLOPE PROTECTION FABRIC (CLASS 10)	2,468	SQYD



PLAN
1" = 30'

- NOTES:**
- For "DETAIL-1" and "DETAIL-2" see "INDEX TO PLANS" sheet
 - Existing Rock Slope Protection to be removed at all existing Piers prior to placement of Rock Slope Protection fabric Class 10 with, Rock Slope Protection (1/2 Ton Class VII, Method A)
 - For Existing Rock Slope Protecting removal, see "EXISTING ROCK SLOPE PROTECTION REMOVAL" detail on "INDEX TO PLANS" sheet

Mariners should use the center of each navigation channel of the bridge to avoid the rock slope scour protection.

Dist	COUNTY	ROUTE	POST MILES TOTAL PROJECT	SHEET NO.	TOTAL SHEETS
03	Sac	99, 160	4.5/5.7, R44.5	175	175

<i>David Romero</i>	6-15-19
REGISTERED CIVIL ENGINEER	DATE
6-17-19	
PLANS APPROVAL DATE	

DAVID A. ROMERO
No. 61240
Exp. 06-30-19
CIVIL ENGINEER
STATE OF CALIFORNIA

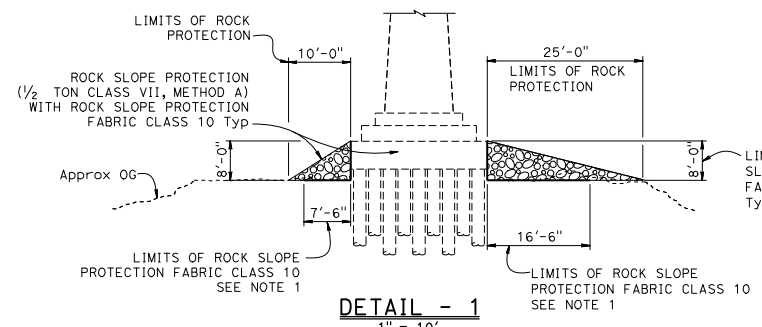
THE STATE OF CALIFORNIA OR ITS OFFICERS OR AGENTS SHALL NOT BE RESPONSIBLE FOR THE ACCURACY OR COMPLETENESS OF SCANNED COPIES OF THIS PLAN SHEET.

INDEX TO PLANS

SHEET NO.	TITLES
1	GENERAL PLAN
2	INDEX TO PLANS

CRITERIA

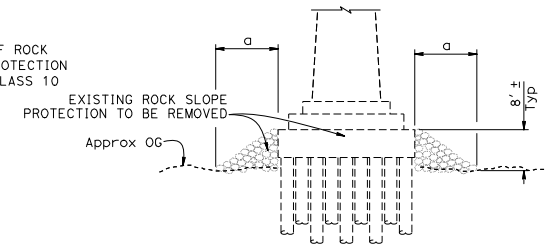
Design Based upon Final Hydraulics Report, Dated Nov 29, 2018



DETAIL - 1
1" = 10'

ROCK SLOPE PROTECTION
(AT PIER 2, PIER 5 OPPOSITE)

- LEGEND:**
- Existing Structure
 - Existing Rock Slope Protection to be removed
 - Rock Slope Protection (1/2 Ton Class VII, Method A)



SECTION A-A
1" = 10'

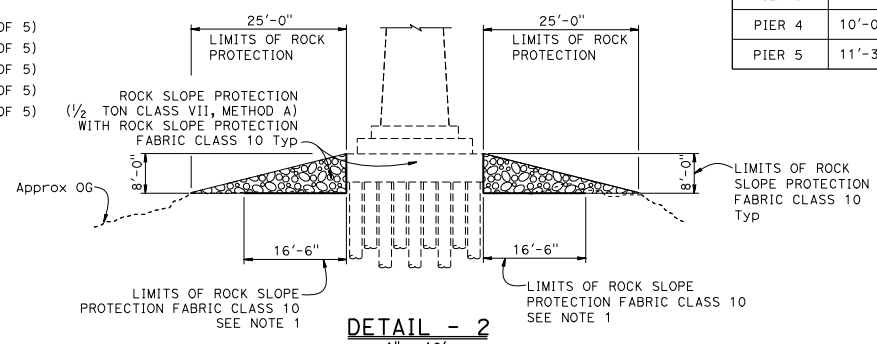
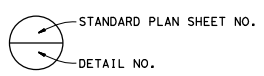
Exist ROCK SLOPE PROTECTION
(TO BE REMOVED AT Exist PIERS)

NOTES:

1. Place Rock Slope Protection Fabric Class 10 to the top of Existing footing
2. For location of "DETAIL-1" and "DETAIL-2" see "GENERAL PLAN" sheet

STANDARD PLANS 2018

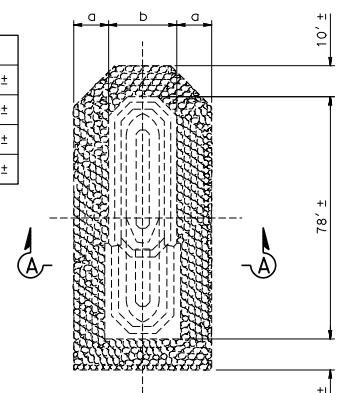
- A3A ABBREVIATIONS (SHEET 1 OF 3)
- A3B ABBREVIATIONS (SHEET 2 OF 3)
- A3C ABBREVIATIONS (SHEET 3 OF 3)
- A10A LEGEND - LINES AND SYMBOLS (SHEET 1 OF 5)
- A10B LEGEND - LINES AND SYMBOLS (SHEET 2 OF 5)
- A10C LEGEND - LINES AND SYMBOLS (SHEET 3 OF 5)
- A10D LEGEND - LINES AND SYMBOLS (SHEET 4 OF 5)
- A10E LEGEND - LINES AND SYMBOLS (SHEET 5 OF 5)
- A10F LEGEND - SOIL (SHEET 1 OF 2)
- A10G LEGEND - SOIL (SHEET 2 OF 2)
- A10H LEGEND - ROCK



DETAIL - 2
1" = 10'

ROCK SLOPE PROTECTION
(AT PIER 3 & 4)

LOCATION	a	b
PIER 2	11'-3"±	22'-0"±
PIER 3	10'-0"±	24'-6"±
PIER 4	10'-0"±	24'-6"±
PIER 5	11'-3"±	22'-0"±



EXISTING ROCK SLOPE PROTECTION REMOVAL
1" = 20'

Exist ROCK SLOPE
(TO BE REMOVED AT Exist PIERS)

DESIGN	BY David Romero	CHECKED Randy Bains	STATE OF CALIFORNIA DEPARTMENT OF TRANSPORTATION	DIVISION OF ENGINEERING SERVICES STRUCTURE DESIGN	BRIDGE No.	SCOUR MITIGATION AMERICAN RIVER BRIDGE INDEX TO PLANS	
DETAILS	BY Min Yu	CHECKED Randy Bains			24-0001L		
QUANTITIES	BY David Romero	CHECKED Randy Bains			POST MILE 44.47		
DATE PLOTTED => 11-OCT-2019			TIME PLOTTED => 11:28	ORIGINAL SCALE IN INCHES FOR REDUCED PLANS 0	UNIT: 3586	DISREGARD PRINTS BEARING EARLIER REVISION DATES	
FILE => 24-00011-a-1tp.dgn			USERNAME => d148585	0	PROJECT NUMBER & PHASE: 0313000136,1	CONTRACT No.: 03-3F5404	
						REVISION DATES	SHEET 2 OF 2
						11/26/19	04/16/19

STRUCTURES DESIGN DETAIL SHEET (ENGLISH) (REVISION 5/8/2018)



NOTICE TO MARINERS



Issued By:

CENTER FOR OPERATIONAL OCEANOGRAPHIC PRODUCTS & SERVICES

1305 East-West Highway, N/OPS3
Silver Spring, MD 20910-3281
301-713-2815
Tide.Predictions@noaa.gov
<https://tidesandcurrents.noaa.gov>

NOAA is Discontinuing the Printed Tide Tables and Tidal Current Tables.

NOAA is ending the production of the printed Tide Tables and Tidal Current Tables publications. The 2020 Tide Tables and Tidal Current Tables were the final printed editions. There will not be NOAA printed Tide Tables and Tidal Current Tables publications for 2021.

NOAA is discontinuing the production of these annual publications due to: (a) recent changes by the U.S. Coast Guard in the interpretation of the requirements for predictions, no longer requiring these publications in paper format and (b) the availability of online and electronic services providing tide and tidal current predictions which meet the U.S. Coast Guard requirements for navigation, and support other activities along the U.S. coast.

Tide and Tidal Current predictions are available through NOAA's Center for Operational Oceanographic Products and Services (CO-OPS) online services:

- NOAA Tide Predictions: https://tidesandcurrents.noaa.gov/tide_predictions.html
- NOAA Current Predictions: <https://tidesandcurrents.noaa.gov/noaacurrents/Regions>

These online services provide predictions which equal or exceed the accuracy and availability of the predictions for domestic locations provided through printed publications, and provide additional capabilities allowing the predictions to better meet a variety of user needs. These online services provide predictions for the U.S. coasts. International predictions will not be available from the online services. Predictions for countries outside the U.S. may be obtained through the Oceanographic / Hydrographic agency in that country.

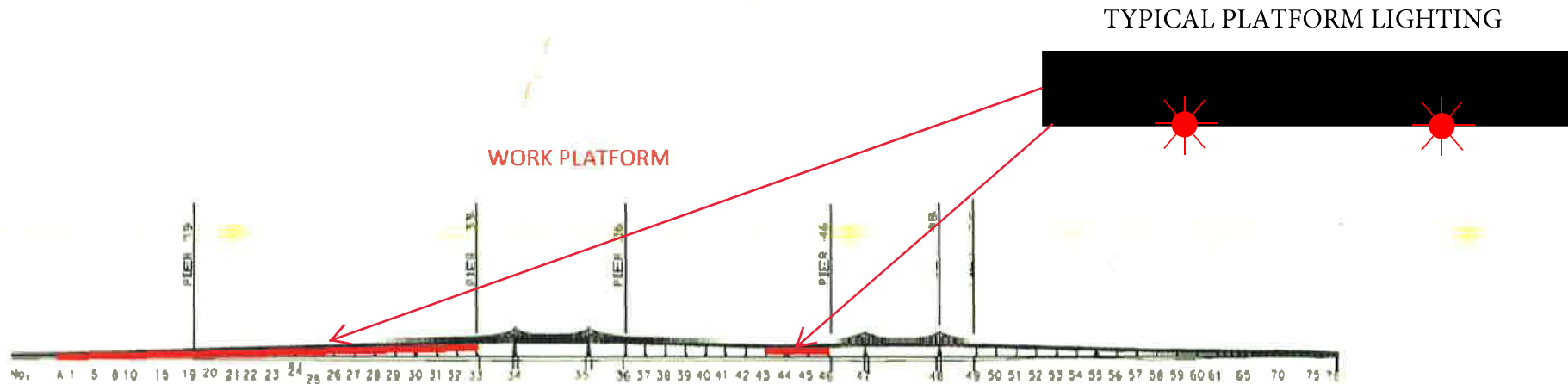
Contact NOAA's Center for Operational Oceanographic Products and Services (CO-OPS) with questions or for further information.

E-mail: Tide.Predictions@noaa.gov

Phone: 301-713-2815

Issued: November 1, 2020

RICHMOND/SAN RAFAEL BRIDGE PAINTING PROJECT
MILE 13.0, SAN FRANCISCO BAY



The upstream and downstream lower edges of each temporary platform will be lighted at night with two steady burning red lights visible at 2,000 yards by approaching vessels. The temporary platforms reduce vertical clearance in each span by 3ft.

VOLUNTARY VESSEL SPEED REDUCTION ZONE TO REDUCE IMPACT OF SHIP STRIKES ON WHALES

NOAA strongly recommends that vessels 300 gross registered tons or larger transit the Vessel Speed Reduction Zone at 10 knots or less from **May 15 – November 15, 2021**. These areas contain populations of endangered blue, humpback and fin whales that are federally protected under the Federal Endangered Species Act (16 USC 1538 et seq.), the Marine Mammal Protection Act (16 USC 1361 et seq.), and the National Marine Sanctuaries Act (16 USC 1431 et seq.).



The southern California Voluntary Vessel Speed Reduction Zone extends from approximately Dana Point to Pt. Arguello as depicted below and vessels are requested to transit at 10 knots or less anywhere in this zone. Vessels already transiting south of the northern Channel Islands are also encouraged to transit outside of the Voluntary Extended Area To Be Avoided * to reduce the overlap of ships and endangered whales. Every effort should be made to comply with any instruction received from the Navy when transiting south of the Channel Islands.

Please report any collisions with whales or any observed injured or dead whales to NOAA at 877-SOS-WHALE (877-767-9425) or to the U.S. Coast Guard on VHF Channel 16. If you see whales, please record the date and location, the number of whales, the species (if known) and a description of the animals and report sightings through WhaleAlert, a free application available at <http://westcoast.whalearg.org>.

For more details, please contact Sean Hastings at sean.hastings@noaa.gov or (805) 893-6424.

34° 34.43' N
121° 01.796' W

Pt. Arguello

Pt. Conception

Santa Barbara

34° 26.01' N
121° 01.796' W

Northern TSS

33° 49.411' N
121° 01.796' W

Pt. Dume

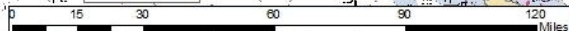
**VOLUNTARY VESSEL SPEED REDUCTION ZONE
10 KNOTS OR LESS**

Dana Pt.

Southern TSS

33° 18.066' N
121° 01.796' W

33° 18.066' N
117° 29.988' W



- NOAA Voluntary Vessel Speed Reduction Zone
- Voluntary Extended Area To Be Avoided (ATBA)
- Existing Areas To Be Avoided (ATBA)
- NOAA Channel Islands National Marine Sanctuary
- Traffic Separation Scheme (TSS)

***NOTE:** Mariners transiting through the western and northern approach to and from the Port Of Los Angeles and Long Beach (LA/LB) are advised the established TSS through the Santa Barbara Channel as shown on NOAA and Admiralty charts is the only International Maritime Organization (IMO) approved routing measure in this area and the Navy advises that continuous hazardous operations may take place at any time on the U.S. Point Mugu Sea Range.



Marine Safety Information Bulletin

Sector Los Angeles – Long Beach

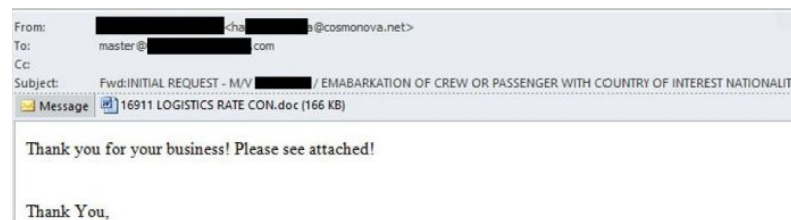
Commander
U.S. Coast Guard Sector
Los Angeles – Long Beach
1001 S. Seaside Avenue Bldg. 20
San Pedro, CA 90731-0208

MSIB Number: 01-21
Date: January 22, 2021

VESSEL CYBERSECURITY ALERT

The Los Angeles-Long Beach maritime community should be on high alert for phishing emails from malicious actors impersonating USCG email addresses, specifically emails containing COVID-19 screening forms for vessels entering port.

Sector Los Angeles – Long Beach responded to a report of a container vessel that received a suspicious email appearing to originate from a legitimate USCG Port State Control (PSC) Officer. The e-mail contained several links as well as an attachment. The recipient was encouraged to open the attachment or click on the links prior to authorization to enter the port. The vessel's master contacted the USCG to verify the validity of the e-mail. The email was not authentic and did not originate from the Coast Guard.



Sector LA-LB Port State Control responded to the incident using their Vessel Cyber Incident Protocol and verified the safety, security, and operational functionality of the vessel's critical systems. Based on numerous recent maritime phishing attempts, the malicious actors prefer to target vessels using spoofed USCG Port State Control e-mails. Several important details in the email include:

- The sender of the e-mail was partially spoofed, and appeared to come from a Coast Guard Port State Control Officer. The sender's e-mail address did not end in "@uscg.mil." (ha[redacted]a@cosmonova.net). Email correspondence from the Coast Guard will end in "@uscg.mil."
- Based on the sophistication of the e-mail, the malicious actor may have some knowledge of the Maritime Transportation System (MTS) and/or may have reviewed a previous legitimate e-mail from the USCG. It cannot be ruled out that the malicious actor may have compromised an e-mail account of a previous recipient of a legitimate USCG PSC e-mail.

- The contents of the e-mail may have been copied from a previous legitimate e-mail.
- The statement, “Until your response is received by this office, the M/V [REDACTED], is not clear to enter the port” which compels the recipient to click a link or open the attachment.

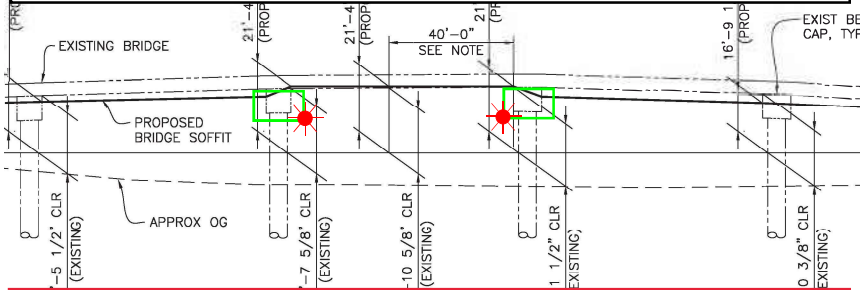
Vessel operators are encouraged to contact USCG via a confirmed legitimate phone number if they question the validity of a USCG Port State Control e-mail. The Coast Guard urges maritime stakeholders to verify the validity of the email sender prior to responding to or opening any unsolicited email messages.

As always, any potential threat to the cybersecurity of your vessel or facility should be taken seriously, and Breaches of Security or Suspicious Activities resulting from cyber incidents shall be reported to the National Response Center (NRC) at **1-800-424-8802**. For additional guidance on reporting cyber incidents refer to CG-5P Policy Letter 08-16, “*Reporting Suspicious Activity and Breaches of Security.*” For further information on spoofing, refer to USCG MSIB: 19-20 “MALICIOUS EMAIL SPOOFING INCIDENTS.”

Pedestrian Bridge Add-On

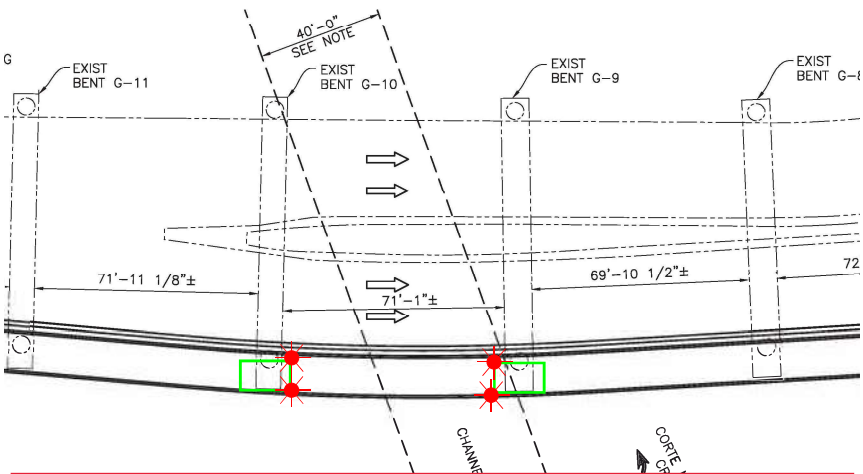
U.S. 101 Bridge, mile 0.6, Corte Madera Creek

Temporary Platform Location & Lighting



The temporary platforms reduce horizontal clearance in main navigation span of the bridge by ~14 feet and reduce vertical clearance by ~9 feet beneath the platforms.

ELEVATION



The upstream and downstream lower outboard corners of the temporary platforms in the navigation are lighted at night with fixed red lights, visible at 2,000 yards from approaching vessels.

MARINE SAFETY/SECURITY
INFORMATION BULLETIN (MSIB) 20-02



U.S. Department of Homeland Security
Coast Guard Sector San Francisco



Safety Alert:
Commercial Fishing Vessel "Work Lights"
Create Potential Night-Time Navigation Hazard

Large merchant ships in or near the offshore approaches to San Francisco Bay have indicated to the Coast Guard that high-intensity "work lights" used by commercial fishing vessels obscure commercial fishing vessels' navigation lights at night and in low visibility conditions.

A clear and present threat to navigation safety exists when one vessel cannot see the navigation lights of another vessel. Navigation light arrangements are required by international and inland navigational rules and regulations. Rule 20 of the Convention on the International Regulations for Preventing Collisions at Sea, 1972 (COLREGS) and Rule 20 of the Inland Navigational Rules Act of 1980 (33 Code of Federal Regulations (C.F.R.) § 83.20) state, in relevant part:

"The Rules concerning lights shall be complied with from sunset to sunrise, and during such times no other lights shall be exhibited, except such lights as cannot be mistaken for the lights specified in these Rules or do not impair their visibility or distinctive character, or interfere with the keeping of a proper look-out.

The lights prescribed by these Rules shall, if carried, also be exhibited from sunrise to sunset in restricted visibility and may be exhibited in all other circumstances when it is deemed necessary."

All vessels operating near the San Francisco Bay offshore traffic lanes are required to comply with applicable navigational rules and regulations. Vessels are encouraged to maintain an active listening watch on VHF/FM Channels 13 and 16 and, when the intentions of another vessel are unclear, communicate to make arrangements to reduce the risk of collision.

Timely reporting and enforcement of violations of navigational rules and regulations promotes safer navigation. Vessel masters, pilots, and operators are encouraged to report incidents which merit investigation. Reports will be fully investigated and may result in license suspension and revocation proceedings or the assessment of civil penalties. Violations of Rule 20 are subject to a maximum penalty amount of \$15,173 per violation under 33 U.S. Code (U.S.C.) § 1608 (for COLREGS violations) and 33 U.S.C. § 2072 (for inland rule violations), as adjusted by 33 C.F.R. § 27.3.

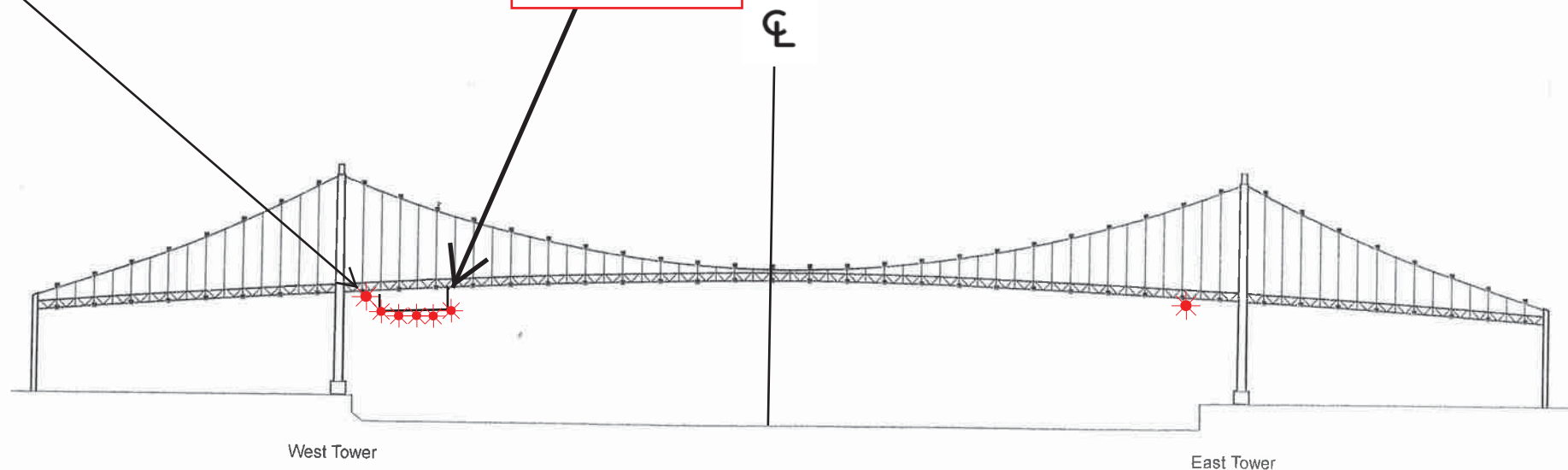
Sincerely,

M. B. BYRD
Captain, U.S. Coast Guard
Captain of the Port

Vincent Thomas Highway Bridge
Mile 3.0
Los Angeles/Long Beach Harbor
Painting Project

West Channel Margin
Light

Below Low Steel
Platform. 5' 4"
reduction in
vertical clearance



A 180 foot long under deck temporary platform will reduce vertical clearance by 5' 4". Each corner and every 50 feet along the the upstream and downstream side of the platform will lighted at night with steady burning red lights visible at 2000 yards by approaching vessels. In a duration of 1-year the platform will progress from the western channel margin light to 250' west of the centerline of the bridge.