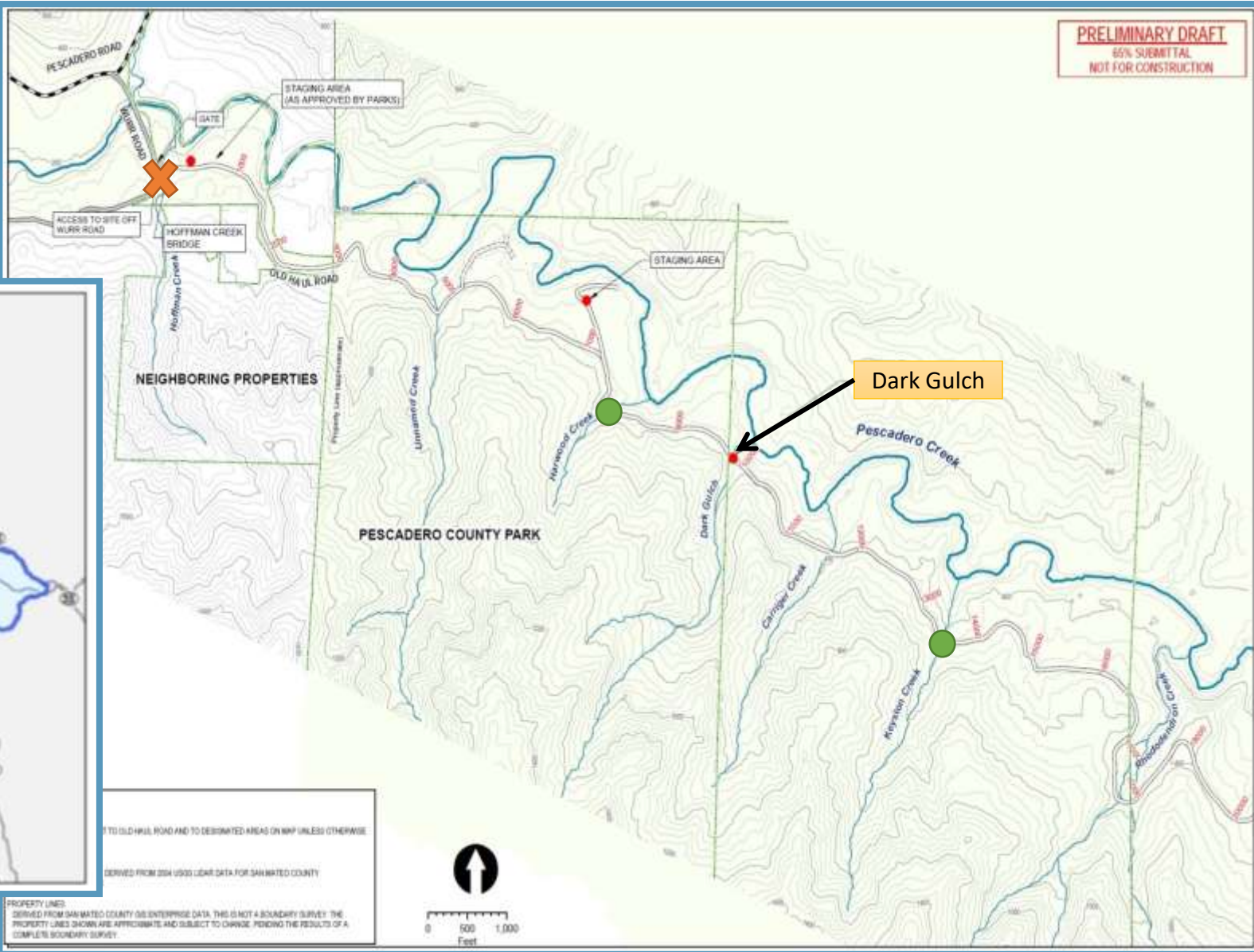
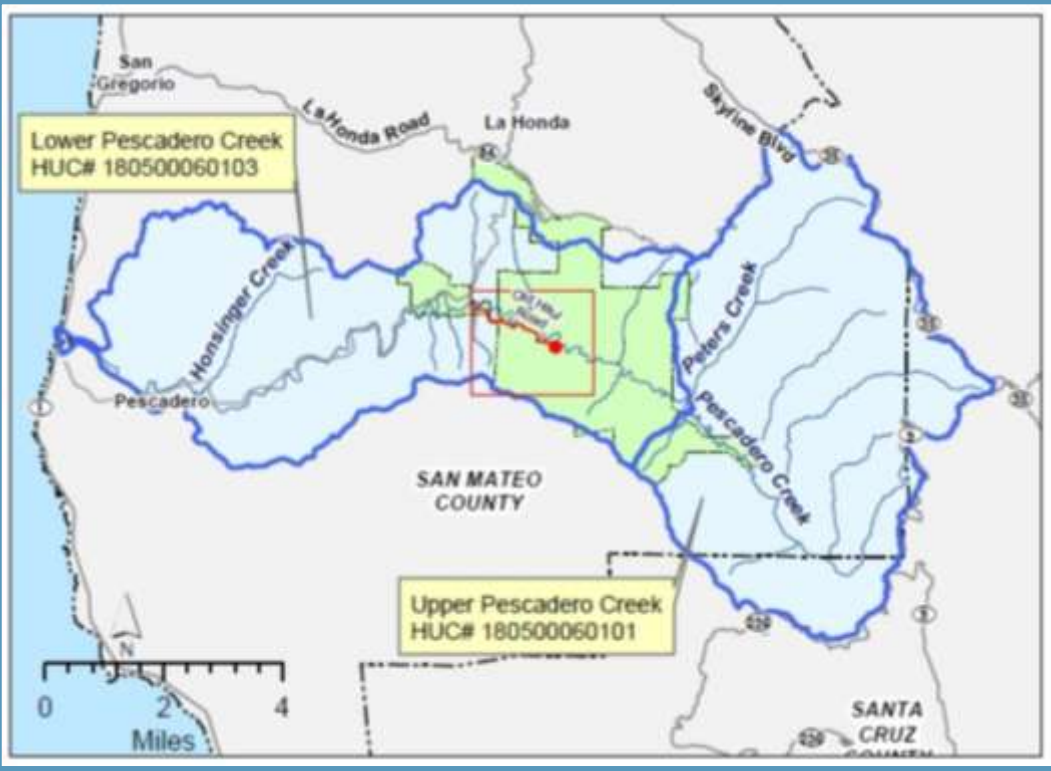


Old Haul Road: Dark Gulch Crossing Stabilization Project

Sara Polgar, Project Manager

Project Location



PRELIMINARY DRAFT
65% SUBMITTAL
NOT FOR CONSTRUCTION

History of Old Haul Road

- Constructed as part of the rail line in early 1900's used for timber harvest in Santa Cruz Mountains
- Crib logs used to buttress and fill creek crossings to create at-grade ("Humboldt") crossing
- Today, Dark Gulch is largest remaining Humboldt crossing in CA: 70' deep, >35,000 cubic yards of sediment, logs, woody debris (~1,900 dump trucks-worth of material)



Example of large fill embankment at a creek crossing. Photo: Jack Gison (1947)



Crib log, or "Humboldt," creek crossing on Old Haul Road. Note men sitting on top of the crossing. Photo: Santa Cruz Lumber Company (1943)



Harwood Creek crossing (2017)

Current Conditions: crossing failures (views from the road)

Dark Gulch crossing
(2015, left. 2019, right)



Dark Gulch (2015)



Crossing failure
(views from below)

Dark Gulch (2020)

← →

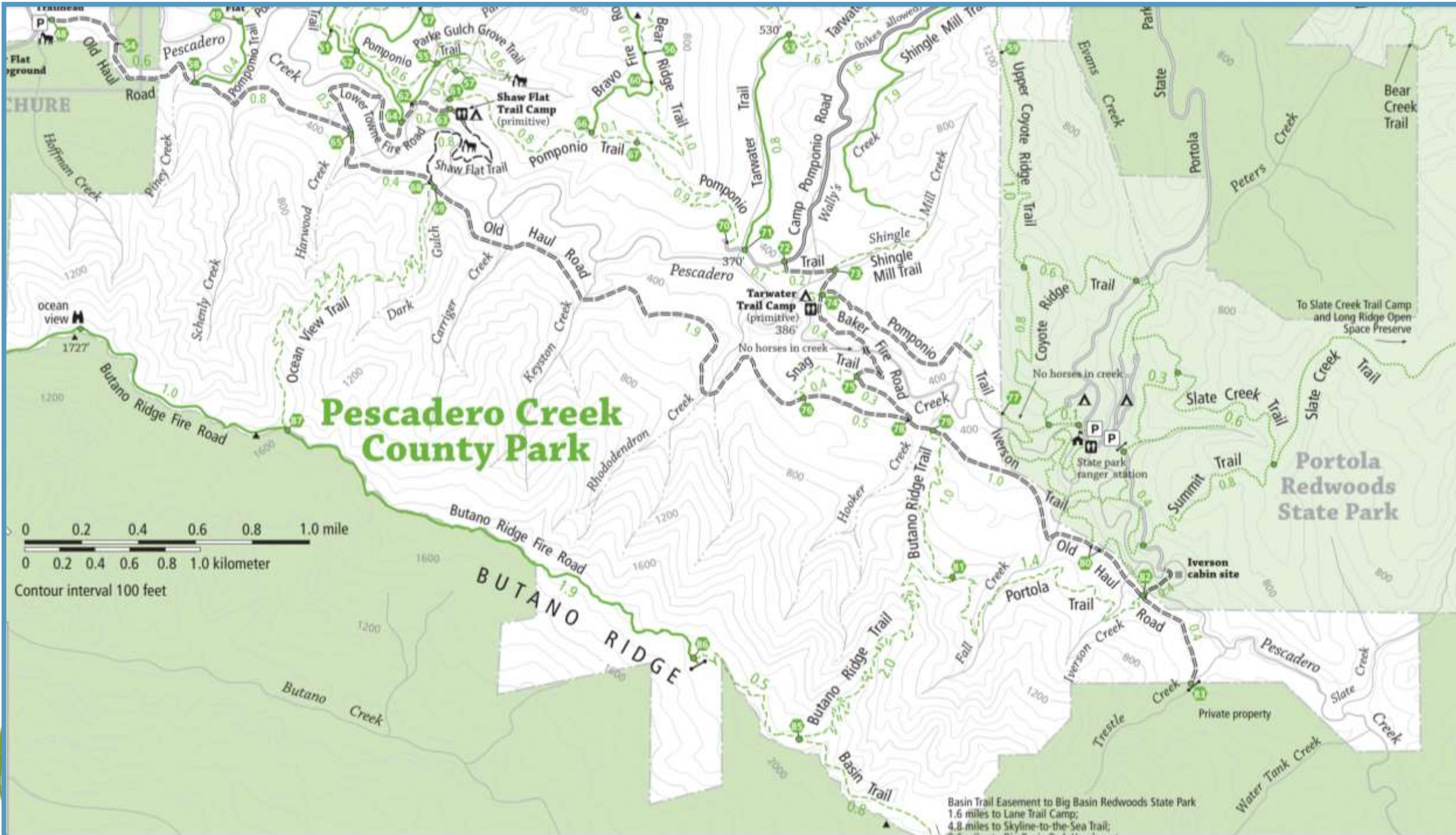
Take from
same spot.

← Looking
up to the
road

Looking →
down to
Dark Gulch
Creek

← note:
Crib logs &
erosion





Pescadero Creek County Park

0 0.2 0.4 0.6 0.8 1.0 mile
 0 0.2 0.4 0.6 0.8 1.0 kilometer
 Contour interval 100 feet

Basin Trail Easement to Big Basin Redwoods State Park
 1.6 miles to Lane Trail Camp;
 4.8 miles to Skyline-to-the-Sea Trail;

Road to construction:

- Road assessment to ID priorities (2015)
- Sediment reduction plan and review/selection of treatment alternatives with help of Integrated Watershed Restoration Program (IWRP) experts (2016-2017)
 - Evaluation of crossing sites (mapping, geomorphic analyses)
- Development of designs & specifications and species protection measures (2017-2018)
- Construction experience: Stabilization of Harwood & Keyston Creeks Crossings also on Old Haul Road (Fall 2018)

OLD HAUL ROAD 2017 EROSION AND SEDIMENT REDUCTION PLAN:

Pescadero Creek County Park
San Mateo County, CA



June 2017

Prepared for:

San Mateo County Resource Conservation District
625 Miramontes Street, Suite 103
Half Moon Bay, CA 94019

SMCRCD-OLDHAULROAD-SRP-488



TIMOTHY C. BEST, CEG
ENGINEERING GEOLOGY AND HYDROLOGY

1002 Columbia Street, Santa Cruz, CA 95060 • Tel (831) 425-5832 • Fax: (831) 425-5830 • e-mail: timbest@coastgeo.com

Construction Approach

(Photos from Harwood & Keyston Creeks crossing stabilization projects completed in Oct 2018)

1. Remove the crossing material



3. Rebuild the crossing with engineered fill



2. Install a culvert pipe to convey storm flows





Pre construction:
Harwood Creek crossing (2017)

Construction outcomes



Post construction:
Harwood Creek crossing
(Nov. 2018)

Dark Gulch Crossing Stabilization Project

- Team:
 - Sara Polgar (Project Manager)
 - Hannah Ormshaw (County Parks Lead)
 - Tim Best, CEG (Project Engineer)
 - Geotechnical Engineer: Haro, Kasunich & Associates
 - Construction Contractor: Giacomini Enterprises
- Funding:
 - County Parks (\$2.15M)
 - State Water Resources Control Board Nonpoint Source Grant Program (\$800K)
- Construction: May-October 2020!

