

Key Facts About Lyme

Lyme disease has been reported in all 50 states and on every continent. The Centers for Disease Control (CDC) estimates more than 300,000 cases per year, but experts believe the true incidence may be much higher.

The poppy seed-sized immature tick, or nymph, is so small that you may not feel the bite. Tick infection rates vary from place to place; in some areas 60% or more may be infected. In California researchers have found them on the undersides of wooden picnic tables and benches in parks. Migrating birds spread ticks widely.

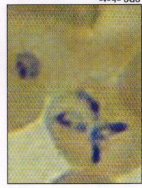


Ticks feed on squirrels.

Ticks feed on deer,

mice, rabbits, squirrels, ground-feeding birds, woodrats, lizards and many other kinds of wildlife. Dogs, cats, horses, and other pets can develop Lyme disease and bring ticks into your home.

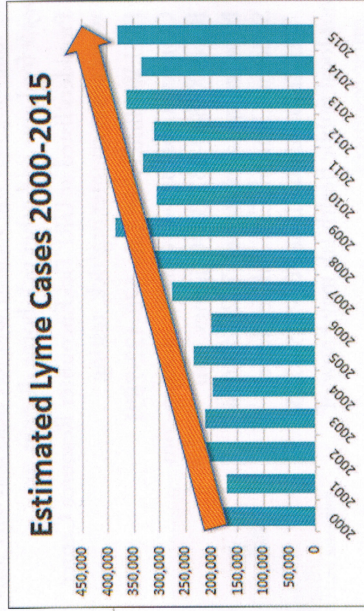
Ticks may carry and spread other diseases including Ehrlichia, Babesia, Anaplasma, Mycoplasma and Bartonella. If you contract one or more of these co-infections, your illness may be more severe and diagnosis and treatment more complicated.



Red blood cell showing tetrad form of Babesia

Cases in the United States

Health departments report cases meeting the strict CDC surveillance case definition. Only one case in ten is reported. Even so, the number of reported cases has doubled since 2000. There are an estimated six times more cases of Lyme disease each year than AIDS/HIV and Lyme is almost twice as common as breast cancer. The surveillance case definition is not intended to be used for diagnosis, but often is.



About LymeDisease.org

LymeDisease.org is the most trusted internet source for Lyme patients in the US. We are committed to shaping health policy through advocacy, legal and ethical analysis, education, and medical research. LymeDisease.org is a 501(c)(3) nonprofit corporation, so donations are tax-deductible. Donate online or mail your check to PO Box 1352, Chico, CA 95927.

Access to our digital journal, *The Lyme Times*, is free with your membership. Join us on Facebook and Twitter. Read our blogs. Sign up for our free online newsletter. To find out more, visit our website, lymedisease.org.



MyLymeData is the first national patient registry and research platform for Lyme disease. Patients report their experiences to help scientists better understand how Lyme affects different people differently. It was conceived by patients, is run by patients, and will address the issues that patients care about. With almost 10,000 people enrolled, it is the largest study of Lyme disease ever conducted. Researchers funded by the National Science Foundation are currently analyzing more than one million data points from MyLymeData. Patients need more than hope—they need data. Add your Lyme data to MyLymeData to help find a cure.

For more information

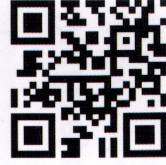
Visit our website: lymedisease.org



Find us on Facebook
[facebook.com/LymeDisease.org](https://www.facebook.com/LymeDisease.org)



Follow us on Twitter
[.twitter.com/Lymenews](https://twitter.com/Lymenews)



Local Resource

Lyme Disease

Who has a Lyme rash and who doesn't?



1



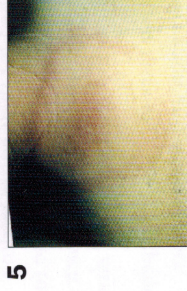
2



3



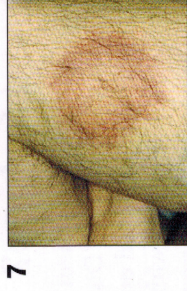
4



5



6



7



8



9



10

Which is *not* a Lyme rash? Look inside for answer!



lymedisease.org
#1 source of Lyme information trusted by patients